

place  
design  
group.



E M E R A L D H I L L S  
STAGE 2-6 - LANDSCAPE DA PACKAGE  
AUGUST 2015

# Contents

Page 3.....	Introduction	Page 30.....	Area E - Entry Statement
Page 4.....	Master plan - Area Reference Plan	Page 31.....	Area E - Entry Statement section
Page 5.....	Design principles and objectives	Page 32.....	Public Art
Page 6.....	Landscape Master plan	Page 33.....	Basin 6&7 - Detention Basin
Page 7.....	Area A - OS4 Heritage Park	Page 34.....	Basin 6 - Detention Basin Section
Page 8.....	Area A - OS4 Heritage Park	Page 35.....	Basin 7 - Detention Basin Section
Page 9.....	Area A - OS4 Heritage Park Sections	Page 36.....	Basin 5 - Detention Basin
Page 10.....	Area A - Heritage	Page 37.....	Basin 5 - Detention Basin Sections
Page 11.....	Area A - Heritage	Page 38.....	West Site boundary treatment
Page 12-13.....	Area A - OS4 Heritage Park, Structure Element	Page 39.....	Typical Street Sections
Page 14.....	Area B - OS2 Linear Park	Page 40.....	Master Plan - Circulation
Page 15.....	Area B - OS2 Linear Park	Page 41.....	Master Plan - Fence Locations
Page 16.....	Area B - OS2 Linear Park Detail plan	Page 42.....	Master Plan - Furniture Locations
Page 17.....	Area B - OS2 Linear Park Detail plan	Page 43-45.....	Master Plan - Furniture Specification sheets
Page 18.....	Area B - OS2 Linear Park Detail plan	Page 46.....	Master Plan - Street Trees
Page 19.....	Area B - OS2 Linear Park Sections	Page 47.....	Indicative Plant Schedule
Page 20.....	Area B - OS2 Linear Park Sections	Page 48.....	Scenic Character and planting; stages 4,5 & 6
Page 21.....	Area C - TL2 Easement Park	Page 49.....	Tree Palette Streetscape (Riparian Corridor, Detention Basin and Internal Park)
Page 22.....	Area C - TL2 Easement Park	Page 50.....	Planting Palette - Shrub and Groundcovers (Internal Park and Entry Statement)
Page 23.....	Area C - TL2 Easement Park Sections	Page 51.....	Planting Palette - Shrub and Groundcovers (Internal Park and Entry Statement) cont. Grasses & Groundcover (Detention Basin)
Page 24.....	Area C - TL2 Easement Park	Page 52.....	Planting Palette - Grasses & Groundcover (Detention Basin) cont. Macrophyte (Littoral Zones and Embankments)
Page 25.....	Area D - PG1 Sports field & community	Page 53.....	Planting Palette - Grasses & Groundcover (Internal Park and Entry Statement)
Page 26.....	Area D - PG1 Sports field & community	Page 54.....	Materials & Finishes Palette
Page 27.....	Area D - PG1 Sports field & community, detail plan	Page 55.....	Play & Skate Park equipment
Page 28.....	Area D - PG1 Sports field & community Sections		
Page 29.....	Area D - PG1 Sports field & community Sections		



## Introduction

'Emerald Hills' is located adjacent to the South West Growth Centre and is bordered by Raby Road to the South and Camden Valley Way to the West. The following Emerald Hills DA Landscape Report outlines the landscape strategy for Stages 2, 3, 4, 5 & 6 of the site and is intended to set the design standard for the remainder of the development. Stage 1 is included in a separate DA report, previously submitted.

This document is intended to define the development and landscape character of Emerald Hills Stages 2-6 and to guide the future development of the site. Emerald Hills will provide a quality sustainable development that recognizes and interprets the rural character, landscape features and undulating topography of the site. It will create special places centred on public amenity such as neighbourhood parks, Riparian Corridors and parkland areas. Key documents (and Meetings) referenced in the creation of this document include:




- The Urban Design Vision Document for the site by Inspire Urban Design and Planning (2011)
- The Emerald Hills Planning Agreement (2013)
- Camden Council DCP and Guidelines (2011) including Emerald Hills DCP amendment (Oct 2014 & Feb 2015)
- The Vegetation Management Plan prepared by Ecological Australia (2015)
- Engineers Report prepared by Cardno (2015)
- Meeting with Planning and Landscape Officer of Camden Council in January 2015.

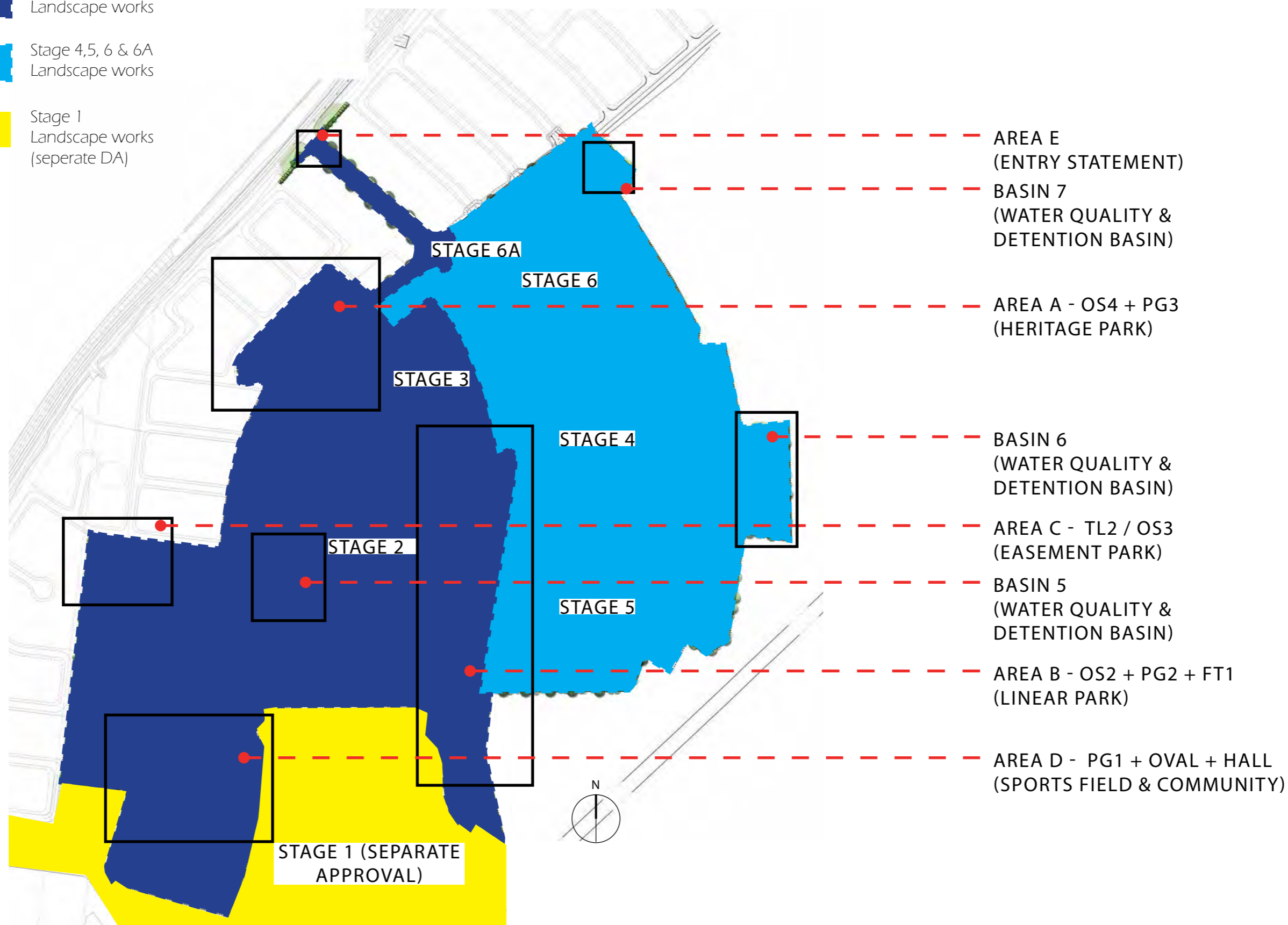
The landscape Design as set out in this DA Report is intended to:

- Provide high quality, low maintenance public domain which affords the community with a high level of amenity and creates a strong sense of place for the development.
- Create attractive streetscapes which retain and enhance significant views and vistas, landmark elements and Landscape Features and;
- Create a strong sense of arrival and identity for the site with a low key thematic entrance statement



## Legend

-  Stage 2 & 3  
Landscape works
-  Stage 4, 5, 6 & 6A  
Landscape works
-  Stage 1  
Landscape works  
(seperate DA)



# Design Principles and Objectives

## DESIGN PRINCIPLES & OBJECTIVES

- To create a memorable and marketable overall landscape image for the Emerald Hills Estate that contributes significantly to the proposed cultural identity of the overall development.
- Provide a legible and exciting project entrance statement at Camden Vally Way that incorporates project branding through signage.
- Capitalise on any views and vistas shaped by the existing topography to create a variety of spatial experiences that exploit view opportunities from and within the site.
- Address site drainage and retention issues, and integrate water sensitive urban design principles.
- Incorporate environmentally sustainable design principles.
- Incorporate Crime Prevention through Environmental Design principles.
- To balance quality landscaping with cost effective maintenance
- Consider Camden Council's objectives of quality, low maintenance and robustness for open space planting, furniture and finishes.
- To provide different scales and variety of open space depending on the locality, whether urban or parkland.
- To ensure accessibility and mobility for all users within the development by adopting the appropriate Australian standards.

The objective of our landscape design strategy for Emerald Hills is to achieve the above design principles in the following ways:

- The streetscapes are to enhance the idea of a natural landscape and reinforce the road hierarchy, through their arrangement, size and species selection. The streets provide important green links and view corridors throughout the site, making connections with and between other open spaces.
- The streets provide a circulation network that is safe, permeable and legible for pedestrians, cyclists and vehicles alike.
- A selection of high quality street furniture, lighting, finishes and planting which relate to the natural environment, low maintenance and robust have been proposed for the site.
- Integration of contemporary interpretive and botanical themes throughout the open spaces and streets will assist in providing a strong sense of character. The active and passive components of the open spaces will provide a range of amenities and uses for the future community.
- To meet the needs of the project there will need to be an emphasis and focus on the development and realisation of multifaceted pedestrian amenity.
- Be sensitive to the needs of pedestrians, cyclists, motorist and promote connections / integration with Camden Valley Way, neighbouring developments, movement patterns and the areas public transport facilities;
- Encourage a sustainable urban ecology by understanding landform, views, microclimates, spatial quality, built form and sun and shade patterns

The diagram to the right illustrates the visual sequence of green spaces users will encounter as they move up the collector road through the centre of the valley. The objective is to draw they eye away, frocusing on sightlines to the Hill top Park.



# Landscape Master Plan



## Legend

- Stage 2 & 3  
Landscape works boundary
- Stage 4,5 & 6  
Landscape works boundary

Stages 2,3,4,5 & 6 incorporate a number of different landscape precincts and character zones.

The 'Collector road' brings you up from stage 1 (seperate DA) past the sports field, skate park & playground. To the West, features a native Riparian Corridor with walkway adjacent leading to a small local park area. Further to the North along the 'Collector road' is the 'Heritage Park' with Playground and community facilities.

Along the boundary of stages 2 and 6 is a linear park, providing a pedestrian pathway link throug the site with 2 local park areas for amenity/recreation. Expansive areas of turf are proposed to provide passive and active recreation for the community.

The overall site character is heavily influenced by native Riparian Corridors that traverse the site and basins to both the entry and internally. Streetscapes are defined by a street tree hierarchy and both native and introduced species.

Easement park

Native Riparian corridor

Water quality & Detention Basin

2.5m shared pathway

Future stages

Transgrid pilon

Carpark

Community facilities,  
playground & skate park

Playing field

Transgrid easement

Future stages

Future stages

Stage 3

Stage 2

Stage 1  
(seperate DA)

Stage 6

Stage 4

Stage 5

Site Entry

Water quality &  
Detention Basin

Heritage park, with  
community facilities,  
large lawn area, feature  
heritage sculptures and  
playground

2.5m shared pathway

Linear park, with  
community amenities,  
including playground  
& picnic seating area &  
pergola

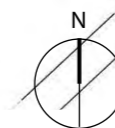
Fitness equipment, trail  
along length of Park

Water quality &  
Detention Basin

Grasses and shrub  
planting to site perimeter

2.5m shared pathway

Linear park, with  
community amenities





### PRECINCT DESCRIPTION

The Heritage Park is located on the former site of the St Andrews Home for boys, built by COX Architects in the 1960's. The recommendations of the interpretation strategy by AHMS (refer to accompanying development application documents) to incorporate the architectural style of the former school are the main driver of the Heritage Park design.

The presence of the former buildings (now demolished) are represented in the proposed design of the park. (The pattern of the footprint of the building has been adopted and integrated into the paving) and the proposed shelter will represent similar architectural forms as adopted by Cox Architects for the buildings. Historic photographs by Max Dupain will be displayed through signage boards which will engage the public with the park's heritage (subject to obtaining the photograph's owners consent).

The park will feature a viewing terrace/platform at mid-level and an upper lookout platform where the shelter and signage boards will be located. A playground, for all ages, will also be incorporated into the park and sculptures distributed throughout the site to encourage play through interaction.

The park will include;

- Terraced turf seating
- Large turf area for active recreation
- 2.5m wide shared path along 2 of the road verges of the park, connecting to the site wide network of pathways. All paths will be wheelchair accessible and designed at greater than 1:14
- 1.5m wide footpath winding through the park and along a 3rd road verge, leaving the remaining road verge turf only
- Step access and wheelchair access to viewing terrace and lookout
- Selected existing trees to be retained
- All pavements and railings will be robust, low maintenance and meet non-slip requirements. All exposed walls will have an anti-graffiti (Matt finish) coating

## Typical Imagery



- 01 2.5M WIDE SHARE PATH
- 02 1.5M WIDE INFORMAL FOOT PATH
- 03 PLAY GROUND (PG3) WITH SOFTFALL
- 04 GARDEN BED
- 05 TURF KICK AROUND AREA
- 06 TURF SEATING TERRACE
- 07 FEATURE 'HERITAGE' PAVING (USE REDUCED SCALE FOOTINGS OF PREVIOUS BUILDINGS AS PATTERN ON PAVING) WITH SCULPTURES AND PHOTOGRAPHIC STORY BOARDS TO REFLECT THE HISTORY OF THE SITE
- 08 VIEWING TERRACE/PLATFORM AT MID LEVEL
- 09 RAMP TO UPPER LEVEL
- 10 UPPER LOOK OUT PLATFORM
- 11 EXISTING TREE TO BE RETAINED
- 12 STEP ACCESS
- 13 SCULPTURES / PUBLIC ART
- 14 FEATURE STEPPING STONES AND BANDING
- 15 TURF
- 16 PERGOLA, WITH ARCHITECTURAL STYLE ELEMENTS
- 17 BLADE WALL
- 18 FEATURE PLAZA PAVING
- 19 BENCH SEATING
- 20 STREET TREES (AS PERTREE DIAGRAM)
- 21 FEATURE CONCRETE PATHWAY
- 22 SANDSTONE PAVING / STEPPING STONES
- 23 LOW PLANTING TO RETAIN SIGHTLINES TO PLAYGROUND



Location Plan

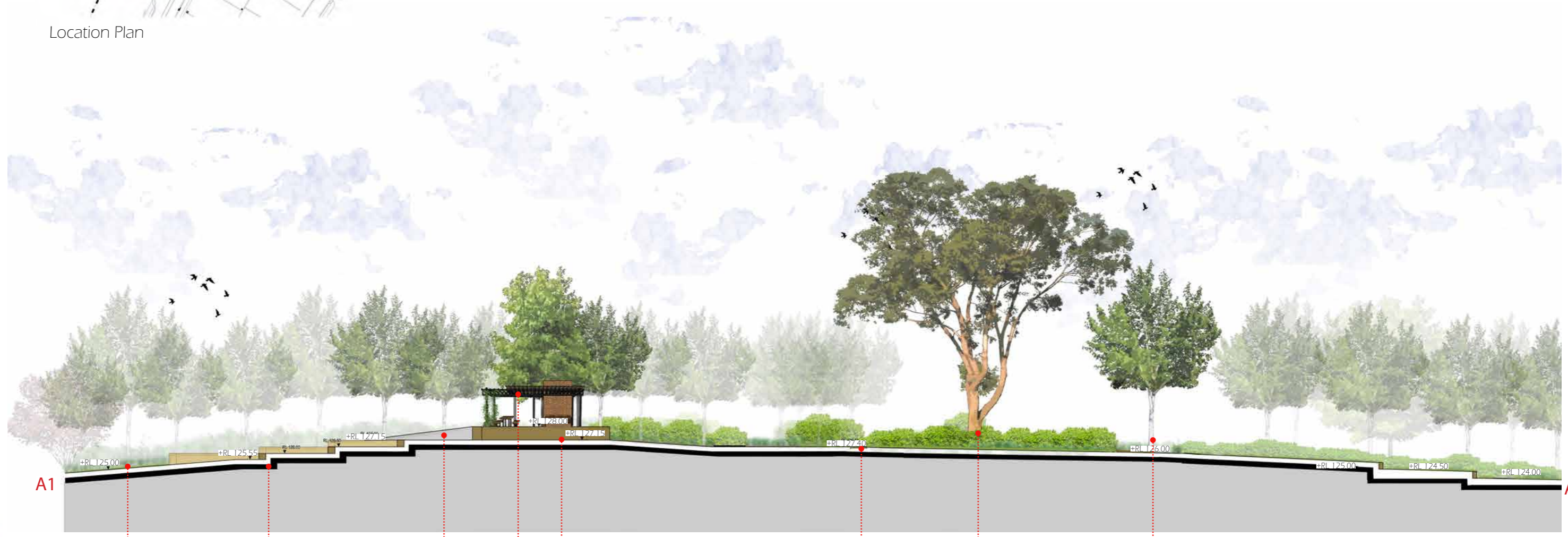


HERITAGE PARK  
scale 1:800 @ A3





Location Plan



- large turf area
- series of terraces providing access to main turfed area and play amenities
- heritage sculptural elements
- pergola structure within lookout area
- ramp to lookout area above
- circular pathway
- existing tree to be retained
- existing tree to be retained, creating focal point in centre of circular pathway

SECTION A  
scale 1:200 @ A3

The Interpretation Strategy by AHMS for the former site of the St Andrews Home for Boys has been produced to ensure that the Aboriginal and European land uses and the Sydney School of Architecture style of the former St Andrews Boys Home (now demolished) are interpreted and incorporated where possible into the public domain of Emerald Hills. Past Land Uses are:

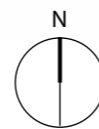
- A) Varied Aboriginal History
- B) Farming and Grazing
- C) St Andrews Home for Boys

The design of the public domain is such that the representation of key historical and architectural references will be made throughout the landscape and park. Site heritage will be incorporated into the design in the following ways:

- 01 Interpretive signage for heritage elements within park
- 02 Life size bronze sculptures
- 03 Interpretation of heritage elements replicated in plan in the new design
- 04 Pergola structure referencing design elements based on past Architecture onsite using recycled materials, where possible
- 05 Feature planting to match species used in the past



HERITAGE PARK  
scale 1:300 @ A3



01 SIGNAGE

Signage will play an important part in the appreciation and interpretation of previous land use on the site. Signage boards will be designed to match the furniture palette and contain details about previous land use, architecture, photographs (Max Dupain reference within the information) and site map. This will include references to the aboriginal history across the entire site, farm history, Cox Architects and the Boys Home.



signage (images from bunya precinct 1)

02 SCULPTURE

Sculpture will be prominent in the design of the park creating a strong sense of place. A number of life size bronze statues symbolic of the students of the St Andrews Home for Boys will be positioned in the landscape and are intended to be located in plaza spaces, around the existing trees, on lawns, sitting on terraced seat walls and on benches. The bronze sculptures will be robust and to Council approval.



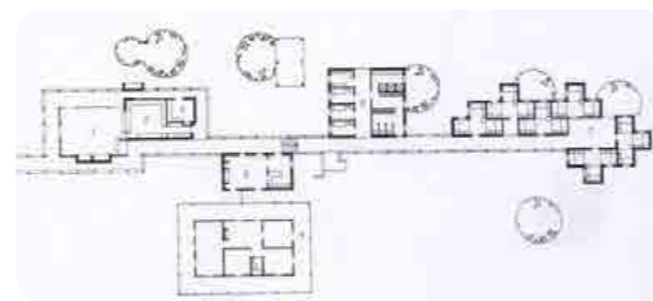
sculptures (place design group 2011)

03 LANDFORM AND PLAN INTERPRETATION

An aerial image of the St Andrews home in 1961 shows ornamental gardens in a splayed or fan shape emanating from the main homestead. This shape will be replicated in plan in the new design, in particular the terraced lawns to the north of park. A scaled version of the original site plan is located to the centre of the park and original bricks/bronze strips could be used to demarcate the building lines in plan.



Aerial photograph, 1961, showing the main homestead



plan of former st andrews home for boys to be represented on site

04 PAST ARCHITECTURE

A Philip Cox creation, the Sulman Award winning built form will be replicated / referenced in the design of the shelter within the park. Materials in the shelter construction will be recycled brick, struck flush mortar and rough sawn timbers. Roof alignments will mirror design for covered walkway areas, as seen in photographs below. There is an opportunity to reuse material from the buildings in the construction, sourced from the recent demolition.



Former st andrews home for boys



1963 - bell tower at former st andrews home for boys



Internal view of Sleeping Facilities at Former St Andrews Home for Boys



Photograph of Homestead walkway, Pavilion structure to mimic forms of the homestead & walkway



Reuse site material  
Recycled brick, approx. 2000 bricks



Reuse site material  
Timber boards, approx. 20m<sup>2</sup> boards



05 HERITAGE PLANTING ALIGNMENTS

The area of the park has been expanded to the North beyond that shown in the DCP in order to retain a number of significant trees on the park, the design will reference landmark plantings in the past such as Eucalyptus trees, specimen Callistemon trees and Grevillea plantings.



Callistemon citrinus  
'White Anzac'



Callistemon viminalis  
'Little John'



Grevillea  
'Honey Gem'





place  
design  
group.



Location Plan

Structure, form and materiality for the proposed shade structure within the Heritage Park has taken inspiration from former St. Andrews home for boys and Farm homestead building. (Refer to AHMS report).

During the Boy's Home period a range of other buildings were located in a north-south line on the eastern side of the original homestead. All of these buildings were constructed of brick, with gable and skillion roofs clad in corrugated-steel. The buildings were undecorated but featured timber-framed, glazed walls to verandahs and covered ways integrated with verandahs and brick-paved pathways. The buildings design demonstrated the restrained but careful detailing and ornate timberwork that characterized the interiors. The buildings remained largely unused from 1987 until 2011.



Reuse site material  
Recycled brick



Reuse site material  
Timber boards



This image shows the way the new Boy's Home buildings related to the homestead.

The complex has been described as follows:

"It displays many of the themes for which Cox has gone on to become famous. The college is comprised of a rather low-slung series of pavilions devised around a covered circulation path. Materials used in construction are **second hand bricks, with struck-flush mortar joints and rough-sawn timbers**. There is a tall bell tower, a centre piece of the planning, which is square in plan and built of brick, with an exposed metal frame at its head, supporting the bell. This is early Sydney School architecture, a style devised around the use of **simple honest warm materials** put together with a deep respect for craftsmanship and often placed in a natural bush setting. Clinker bricks and rough sawn stained timber put together with exposed bolts are a distinguishing feature of such work." (McMahon, 2001, p. 66).

(Text compiled from Interpretation Strategy report prepared by Archaeological & Heritage Management Systems 2014)



PLAN  
scale 1:100 @ A3



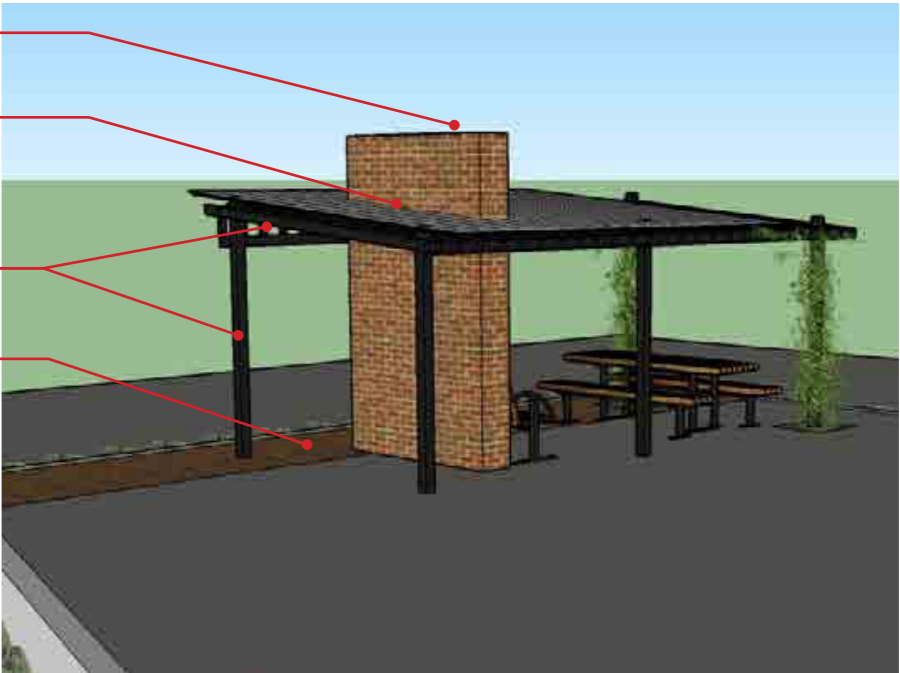
- Concrete block wall with recycled bricks as cladding, where possible
- Hardwood Timber Baten roof, (half with Recycled Timber board on underside of roof)
- Hardwood Timber posts & framing painted black
- Recycled Brick as surface finish

PERSPECTIVE VIEW A  
NTS



- Concrete block wall with recycled bricks as cladding, where possible
- Class 1 Hardwood Timber Baten roof, half with Recycled Timber board on underside of roof
- Hardwood Timber posts & framing painted black
- Recycled Brick as surface finish

PERSPECTIVE VIEW B  
NTS



PERSPECTIVE VIEW C  
NTS



## PRECINCT DESCRIPTION

The Linear Park provides a multitude of amenities. The park will provide opportunities for active recreation; through a series of exercise stations along the 2.5m shared pathway, a playground at the Northern end of the park and large open turf areas for play. Passive recreation will also be provided through smaller, more intimate areas of turf or paving, allowing small gatherings or individual relaxation.

A picnic / seating area is proposed, with shade provided by a Pergola structure (Nth end of park). Small turf terraces (both Nth & Sth ends of the park) will provide further seating opportunities. A 2.5m shared pathway weaving through the park provides connection to the overall pathway network within the site.

The accomodation of the ridgetop landform and it's revegetation to contribute to the Landscape character of the area are particular objectives of the design.



This Park includes:

- Raised turf areas with seat wall on edge, within paved 'plaza' area to focal point of Northern corner of the park
- Large areas of open manicured and/or low maintenance turf
- 2.5m shared pathway
- Feature tree avenue adjacent curved pathway, within Northern corner of the park
- Series of exercise stations along length of park
- Toilet block / amenities
- Picnic seating area with Pergola
- Playground (as per VPA, PG2 requirements)
- Fitness trail (as per VPA, FT1 requirements)
- Tree planting species selection in accordance with Scenic Character Protection Area requirement, as per DCP



LINEAR PARK  
scale 1:1400 @ A3

- 01 FEATURE TURF & PLANTING
- 02 PAVING (SANDSTONE)
- 03 OPEN LAWN, MANICURED
- 04 GARDEN BED
- 05 FEATURE TREE AVENUE
- 06 TURF SEATING TERRACE
- 07 EXERCISE STATION
- 08 PLAY GROUND
- 09 COMPOSITE TIMBER
- 10 TOILET BLOCK
- 11 PICNIC PERGOLA
- 12 LOW MAINTAINANCE GRASSES / PLANTING TO EMBANKMENT
- 13 BENCH SEATING
- 14 STREET TREES (AS PER TREE DIAGRAM)
- 15 2.5M WIDE SHARE PATH
- 16 1.5M WIDE INFORMAL FOOT PATH

-  PROPOSED EVERGREEN TREES
-  PROPOSED DECIDUOUS TREES



Location Plan

## Typical Imagery

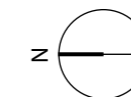




- 01 LOW MAINTENANCE PLANTING
- 02 PLAZA PAVING (SANDSTONE/CONCRETE)
- 03 OPEN LAWN, MANICURED
- 04 GARDEN BED
- 05 FEATURE TREE AVENUE
- 06 TURF SEATING TERRACE
- 08 PLAY GROUND
- 10 TOILET BLOCK
- 11 PICNIC PERGOLA WITH SEATING
- 13 BENCH SEATING
- 14 STREET TREES (AS PER TREE DIAGRAM)

- PROPOSED EVERGREEN TREES
- PROPOSED FLOWERING TREES
- PROPOSED DECIDUOUS TREES

LINEAR PARK NTH  
1:1000 @ A3





03 OPEN LAWN, MANICURED

04 GARDEN BED

07 EXERCISE STATION

14 STREET TREES (AS PER TREE DIAGRAM)

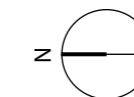
15 NATIVE GRASSES AND LOW SHRUB PLANTING/  
GROUND COVER TO EMBANKMENT

PROPOSED EVERGREEN TREES

PROPOSED FLOWERING TREES

PROPOSED DECIDUOUS TREES

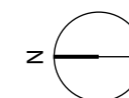
LINEAR PARK NTH  
1:1000 @ A3

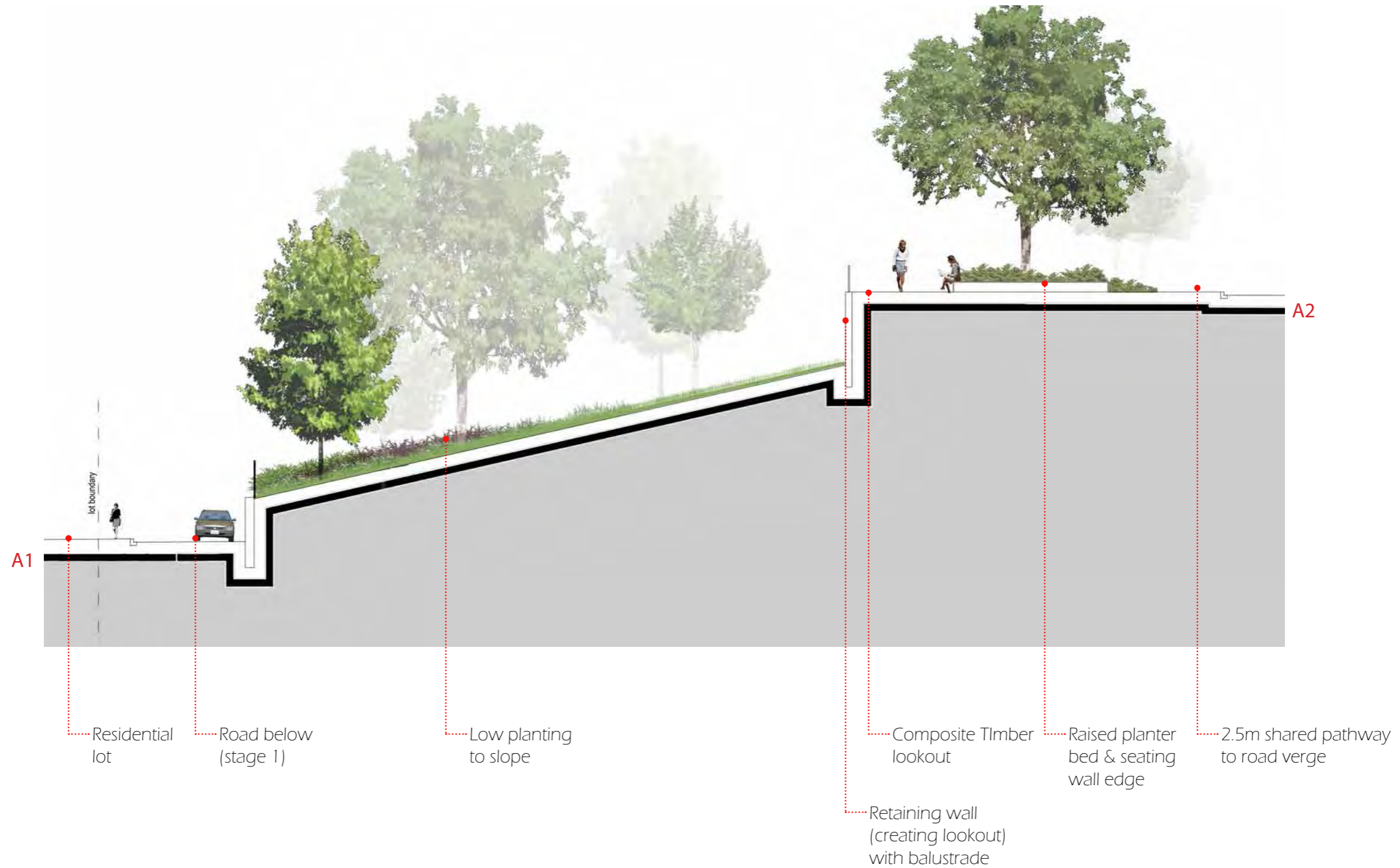




- 02 PAVING (SANDSTONE)
- 03 OPEN LAWN, MANICURED
- 04 GARDEN BED
- 09 COMPOSITE TIMBER
- 12 TURF TO EMBANKMENT
- 14 STREET TREES (AS PER TREE DIAGRAM)
- 15 NATIVE GRASSES AND LOW SHRUB PLANTING/ GROUND COVER TO EMBANKMENT
- PROPOSED EVERGREEN TREES

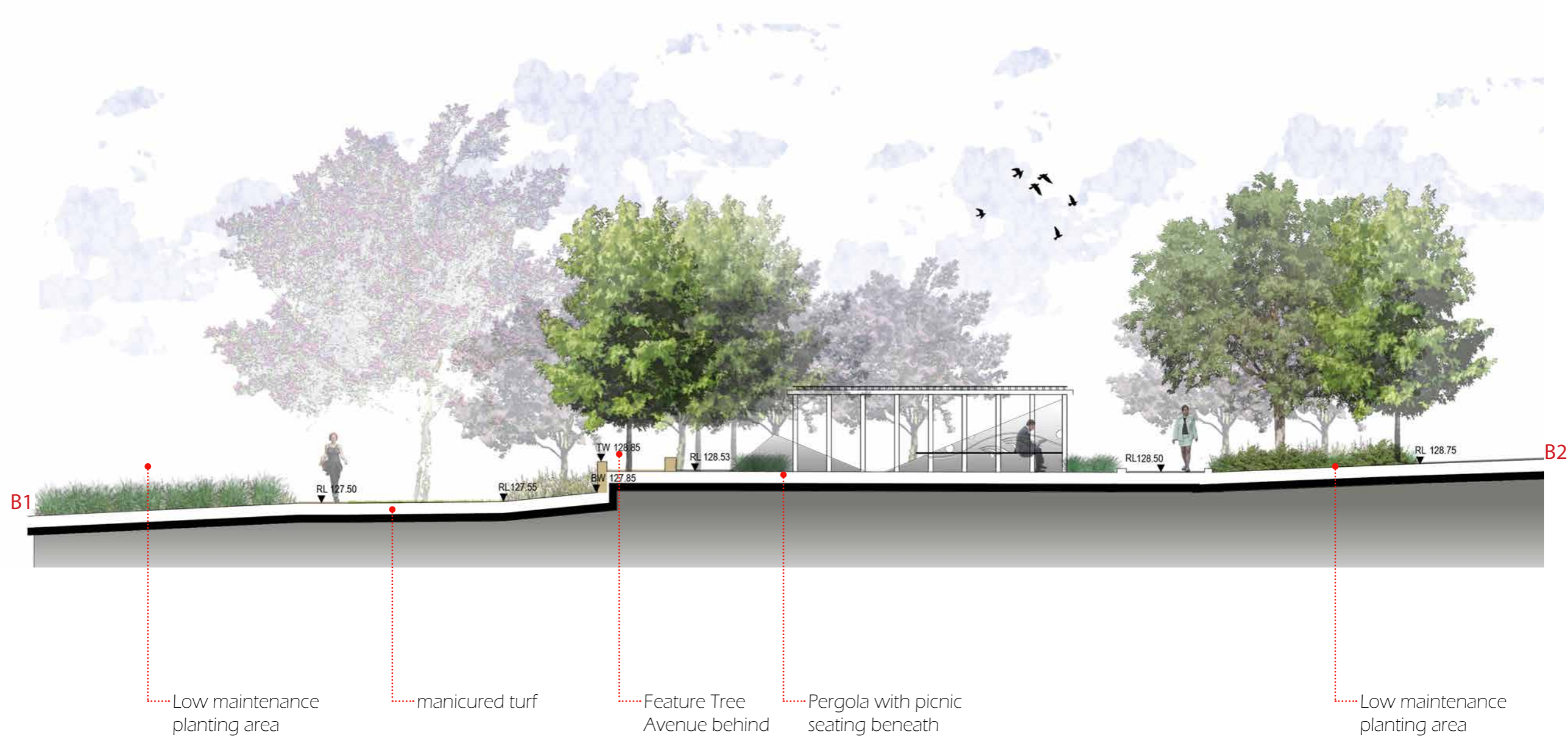
LINEAR PARK STH  
1:1000 @ A3



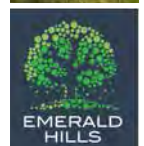
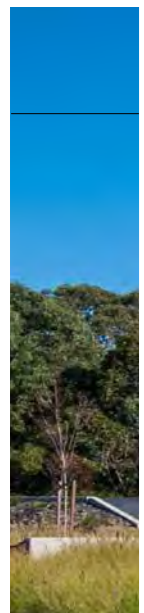


SECTION A  
scale 1:100 @ A3





SECTION B  
scale 1:100 @ A3





#### PRECINCT DESCRIPTION

The Easement Park is located partly within a Transgrid power easement, which accomodates a 330kv. high voltage powerline.

The park provides 2 main uses, one being the Native Riparian corridor and the other a small corner park overlooking the riparian corridor and large turf areas. Seating opportunities & terrace walls, provide opportunity for passive recreation, while the larger turf areas provide active recreation opportunities.

A 2.5m shared pathway meanders through the lawn areas adjacent to the Riparian corridor, connecting to the larger site wide network. A 'circuit' of shared pathway is provided around the site to ensure connectivity throughout the development.

Design objectives include accomodating Transgrid requirements for Landscaping within, and access through, the easement.

This Park includes:


- 2.5m wide shared pathway
- Lawn terraces with seating wall, and bench seating
- Retaining wall (with balustrade) creating lookout point overlooking riparian corridor to the South East
- Linear Riparian Corridor with Native Trees within buffer planting (grasses and low shrubs), planting to be lower than 4m mature height, as per Transgrid requirements.

place  
design  
group.

— RIPARIAN PLANTING, REFER TO VMP BY ECOLOGICAL AUSTRALIA



### Location Plan

- 
- PROPOSED EVERGREEN TREES
- PROPOSED FLOWERING TREES
- PROPOSED DECIDUOUS TREES

NOTE: MAX. TREE HEIGHTS TO CONFORM  
WITH TRANSGRID REQUIREMENTS

- 01 SEATING WALL
- 02 RETAINING WALL WITH BALUSTRADE
- 03 OPEN LAWN (MANICURED)
- 04 LOW MAINTENANCE GRASS (SEED)
- 05 2.5M WIDE SHARE PATH
- 06 BENCH SEATING
- 07 GARDEN BED
- 08 NATIVE RIPARIAN CORRIDOR, BUFFER PLANTING
- 09 NATIVE RIPARIAN CORRIDOR
- 10 TRANSGRID EASEMENT

ALL PLANTING (INCL. TREES) ARE TO BE LOW  
ER THAN 4M MATURE HEIGHT, AS PER TRANSGRID  
REQUIREMENTS

## Typical Imagery

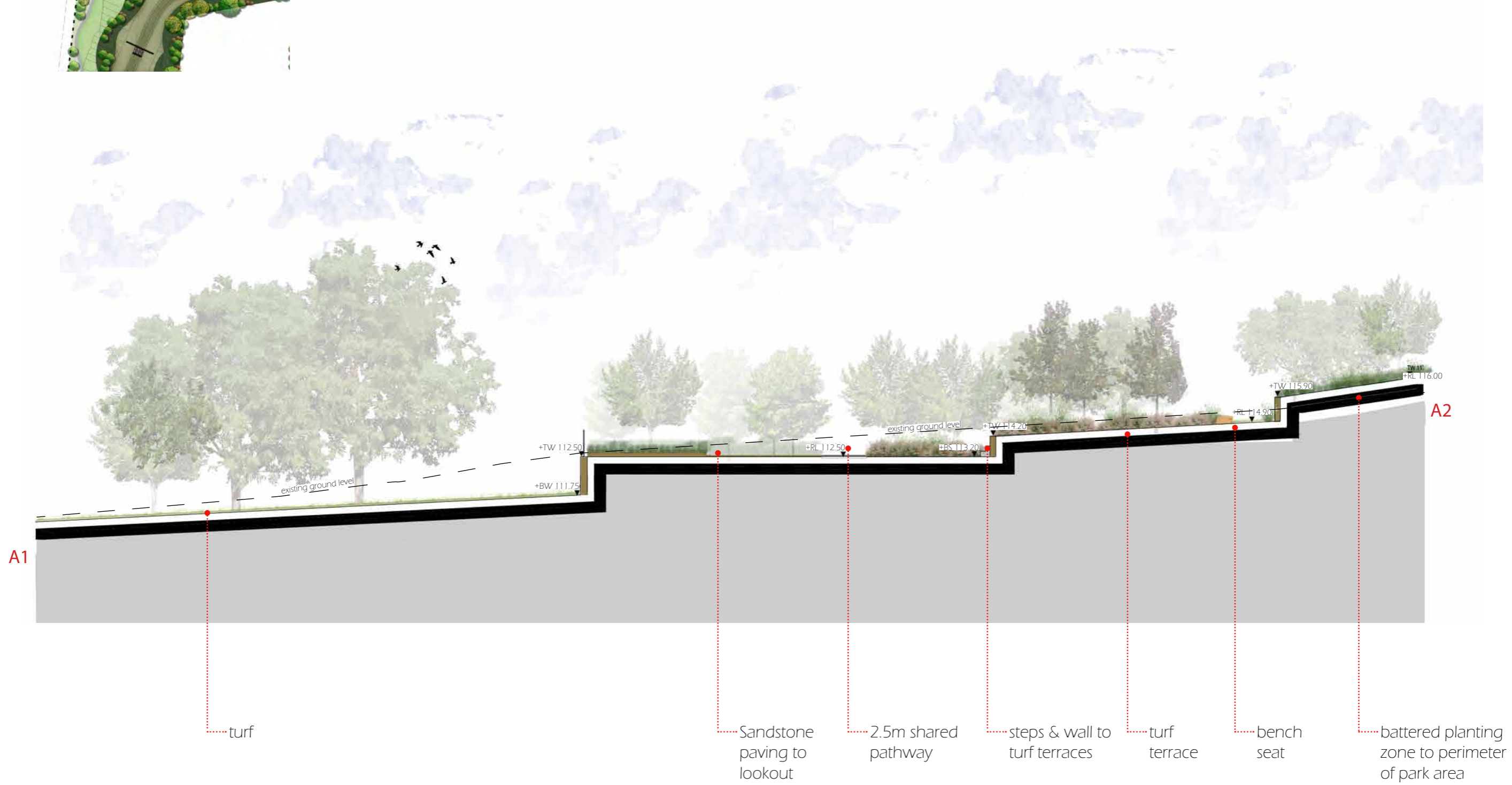




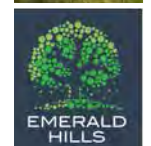
EMERALD HILLS  
Stage 2 - 6  
Landscape DA Package  
REV. D AUGUST 2015



place  
design  
group.



EASEMENT PARK SECTION A  
scale 1:100 @ A3



PROPOSED EVERGREEN TREES

NOTE: MAX. TREE HEIGHTS TO CONFORM WITH TRANSGRID REQUIREMENTS

- 01 LOW MAINTENANCE GRASS (SEED)
- 02 2.5M WIDE SHARE PATH
- 03 2.5M WIDE SHARE PATH, AS PER ENGINEERS DWGS
- 04 GARDEN BED
- 05 NATIVE RIPARIAN CORRIDOR, BUFFER PLANTING
- 06 NATIVE RIPARIAN CORRIDOR
- 07 TRANSGRID EASEMENT
- 08 TRANSGRID PILON
- 09 WIER ELEMENTS WITHIN RIPARIAN CORRIDOR, TO ENGINEERS DETIALS

EASEMENT  
1:800 @ A3



Location Plan

PRECINCT DESCRIPTION

The Sports field and community area of the site (Stage 2) provides an expansive range of facilities & amenities for the community. Users are brought into the area off the street via a set of stairs or ramp, or from the carpark in the North East. A skate park and playground are proposed in this area to provide amenity and activities for children, of all ages.

A 2.5m wide pathway leads to the Community building (part of a separate DA) and also to the sports field, via a series of Terraced walls. These walls will provide seating opportunities for people viewing the games being played on the sports field. A 1m white picket fence is proposed between the bottom wall and the sports field creating a visual & physical barrier for safety of the users of the space.

The objective of the siting of the Oval is to act as a visual stepping stone to draw the eye up the valley in the centre of the site to Park OS4 at the top of the hill beyond.

This Park includes:

- Multi-use Sports field, in accordance with the VPA Park PG1
- Open turf areas adjacent to the sports field
- A series of terraced walls leading from the Community building up to the Sports field
- Carpark
- Children's playground
- Skate Park
- Practice cricket nets

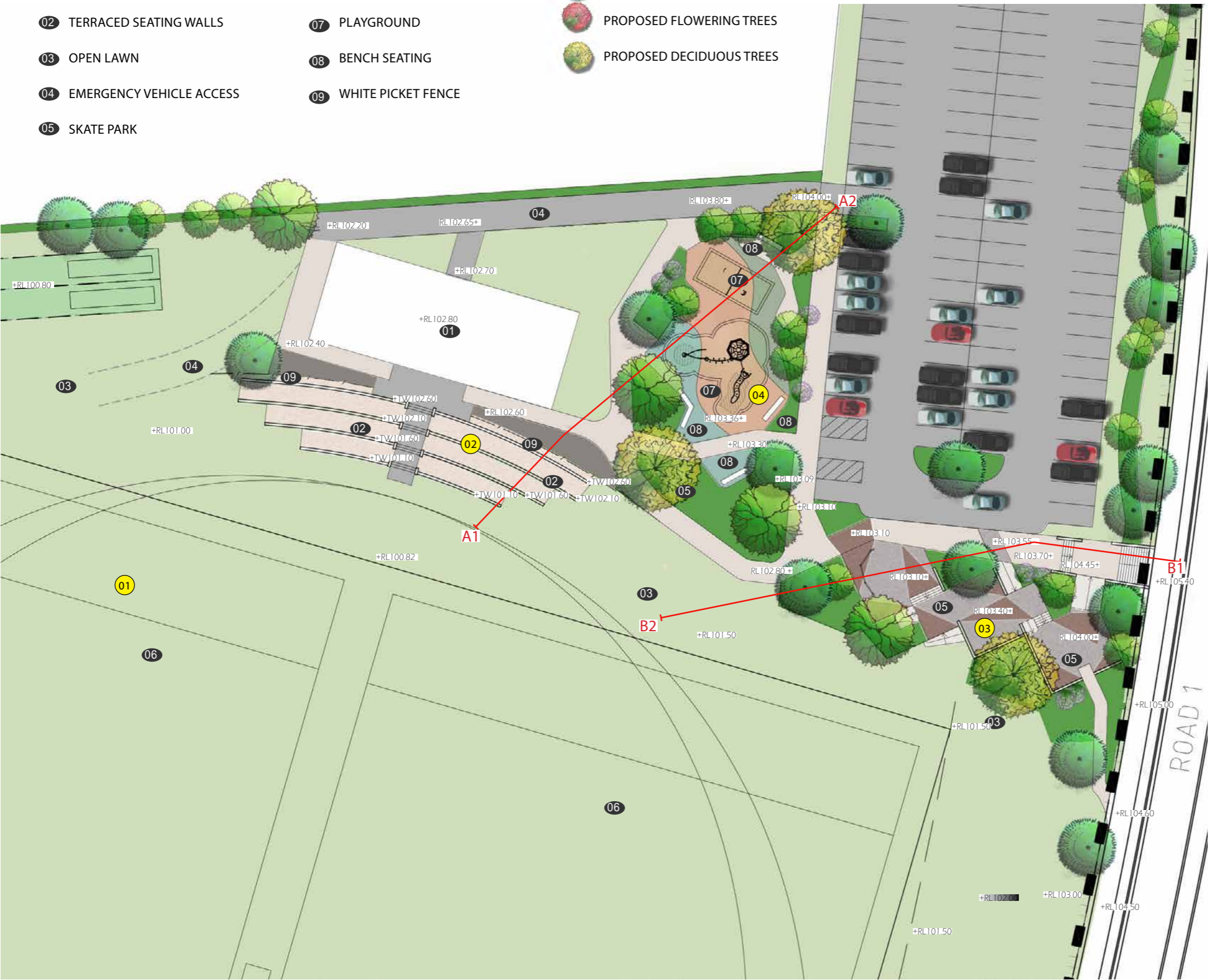
- 01 COMMUNITY BUILDING
- 02 TERRACED SEATING WALLS
- 03 OPEN LAWN
- 04 EMERGENCY VEHICLE ACCESS
- 05 SKATE PARK
- 06 SPORTS FIELD
- 07 PLAYGROUND
- 08 BENCH SEATING
- 09 WHITE PICKET FENCE

- PROPOSED EVERGREEN TREES
- PROPOSED FLOWERING TREES
- PROPOSED DECIDUOUS TREES

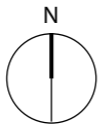
Typical Imagery

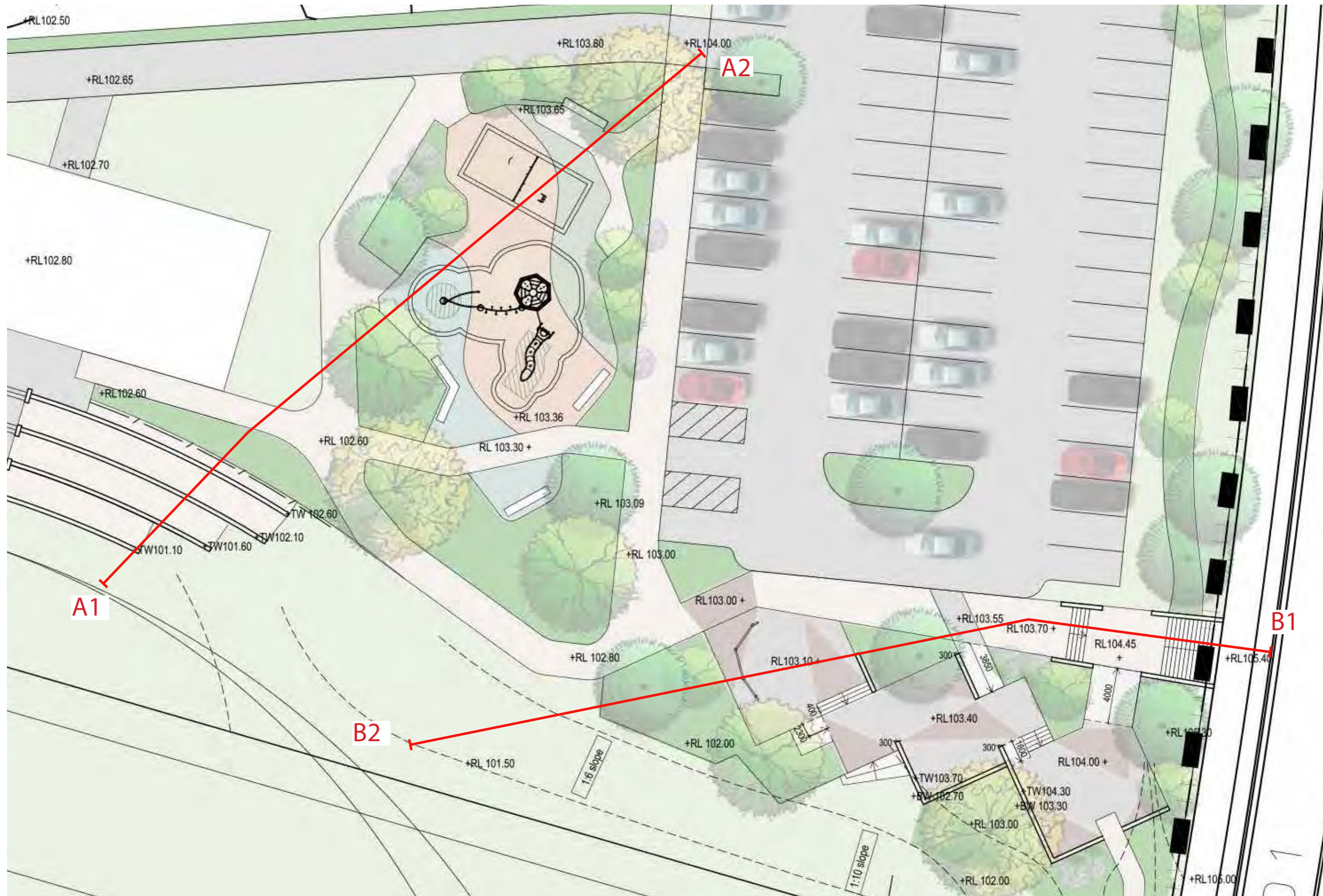


Location Plan



SPORTS CENTRE, SKATE PARK & PLAYGROUND  
1:500 @ A3

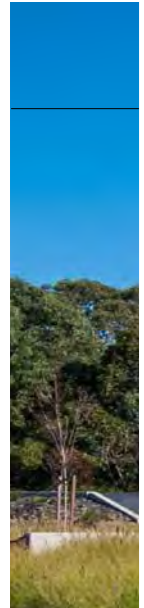


place  
design  
group.

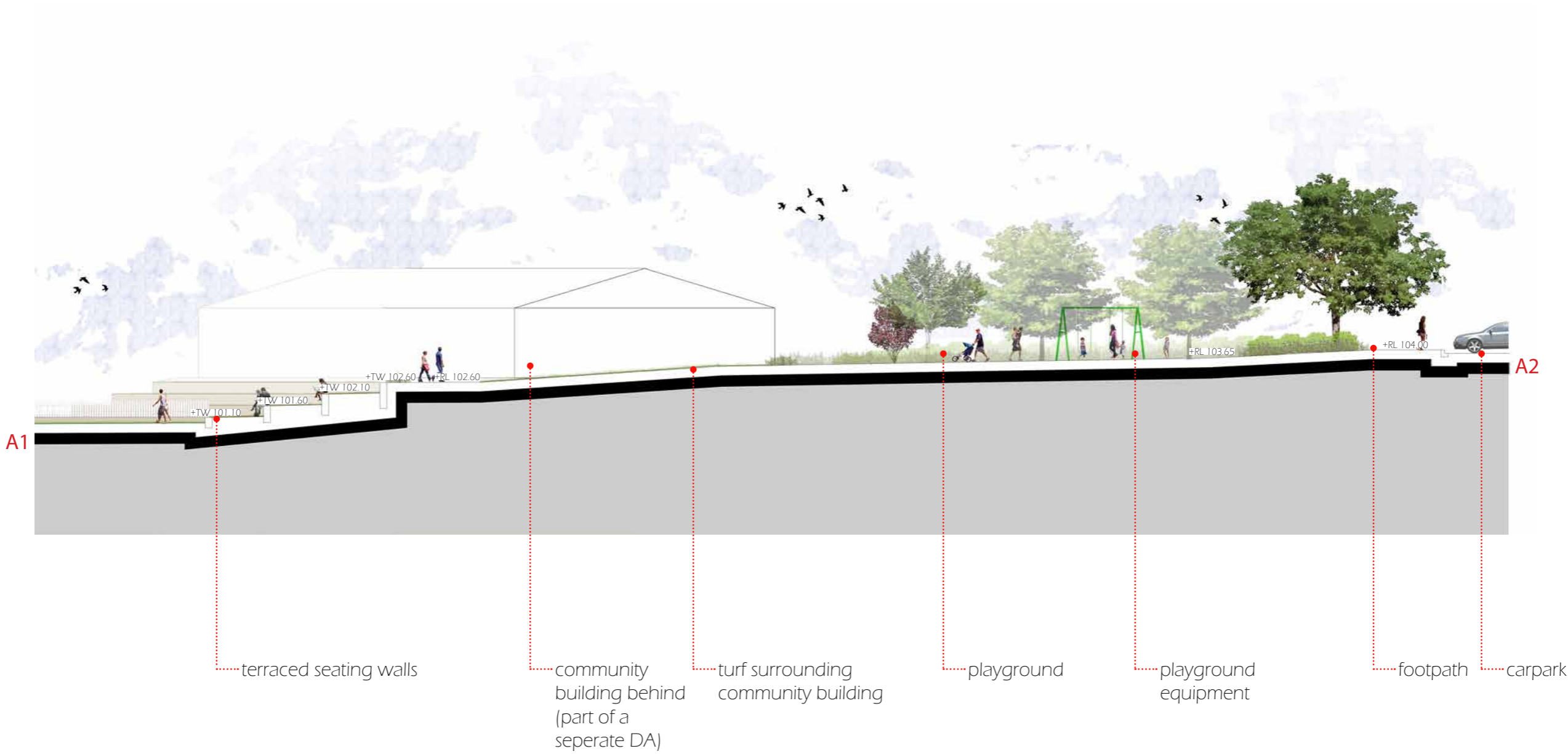
SPORTS CENTRE, SKATE PARK & PLAYGROUND, DETAIL PLAN  
1:250@ A3



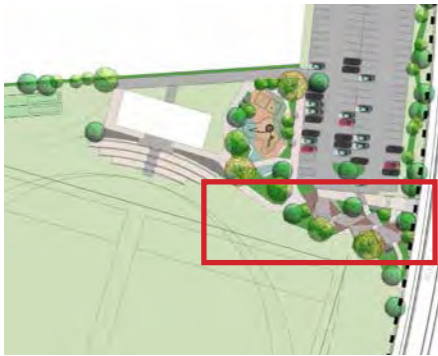
EMERALD HILLS  
Stage 2 - 6  
Landscape DA Package  
REV. D AUGUST 2015



place  
design  
group.



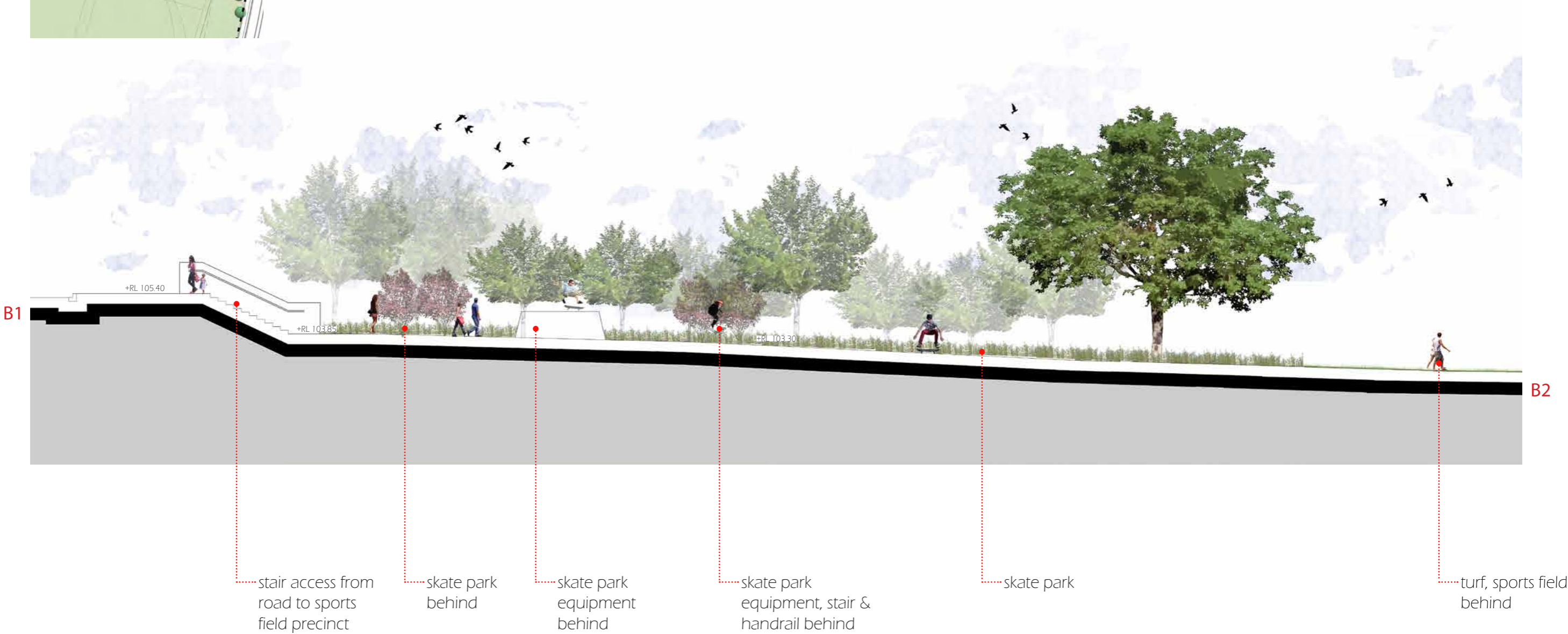
SPORTS CENTRE, SKATE PARK & PLAYGROUND SECTION A  
1:200 @ A3



EMERALD HILLS  
Stage 2 - 6  
Landscape DA Package  
REV. D AUGUST 2015



place  
design  
group.



SPORTS CENTRE, SKATE PARK & PLAYGROUND SECTION B  
1:200 @ A3

Typical Imagery



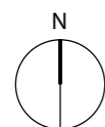
- 01 SIGNAGE WALL  
(TO MATCH RABY ROAD ENTRY)
- 02 PERGOLA STRUCTURE WITH CLIMBERS
- 03 STREET TREE (AS PER TREE DIAGRAM)

PROPOSED EVERGREEN TREES

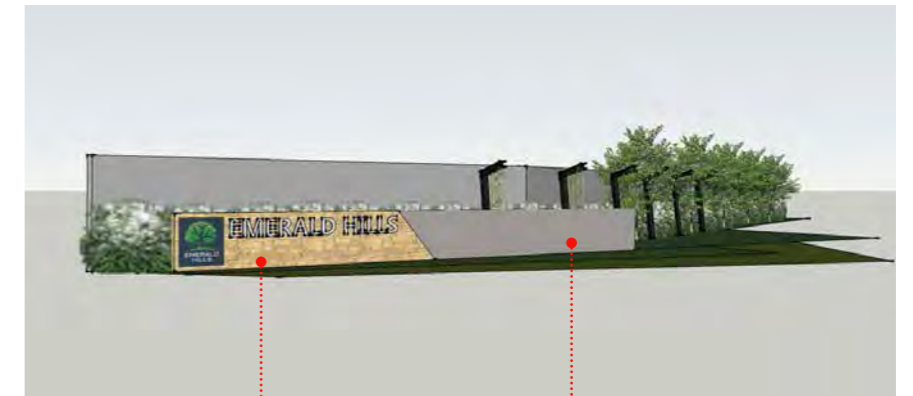
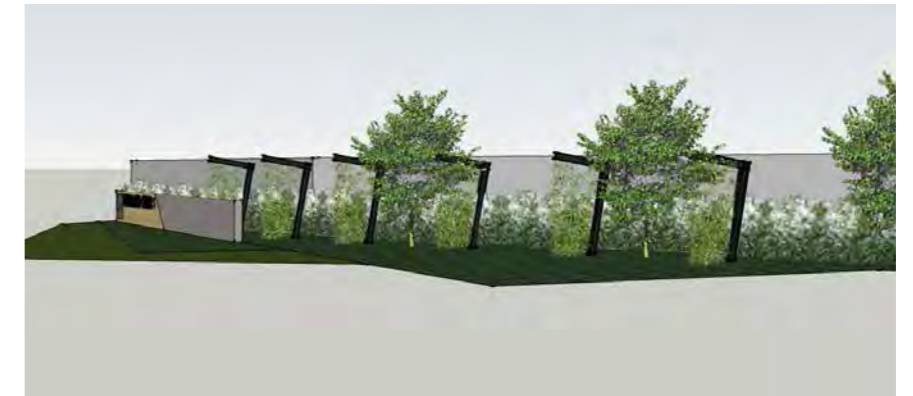
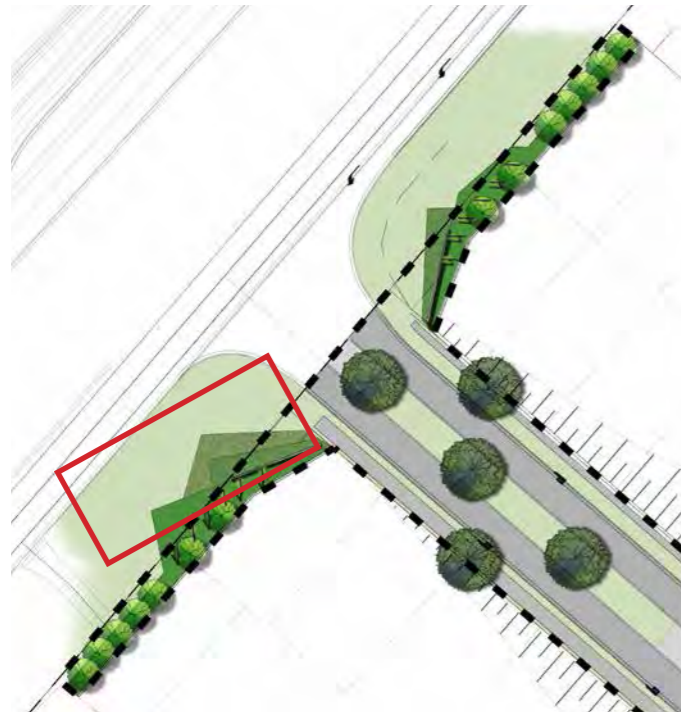


Location Plan

ENTRY STATEMENT  
1:300 @ A3



place  
design  
group.



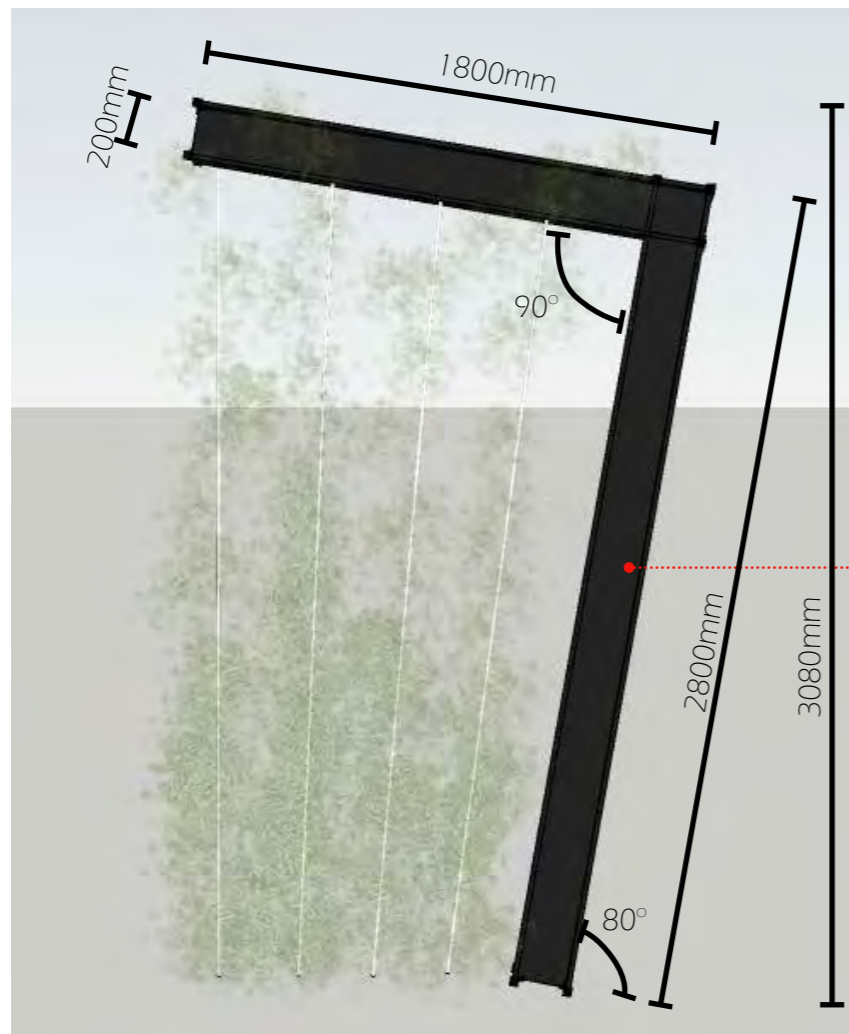
STRUCTURE - SERIES OF PERSPECTIVES

Future 3m high Acoustic wall behind (subject to sepearte DA)

1.5m high sandstone clad wall (split face finish) with steel signage (estate branded) fixed to wall.

1.5m high concrete wall, salt finish (typical image below)

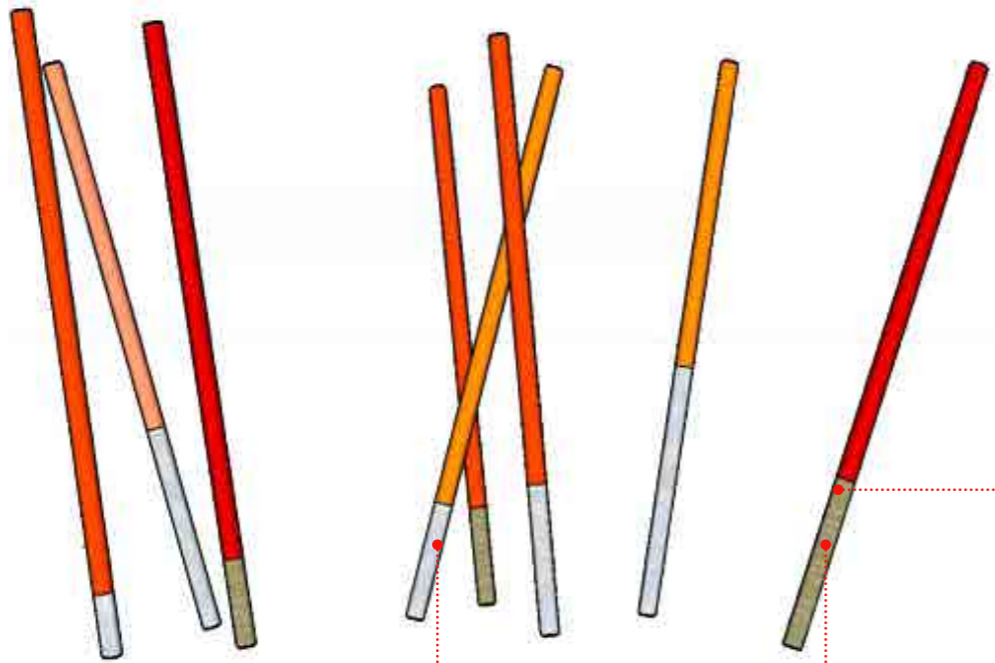
Steel pergola structure with Tensile wires at varying angles for climbing plants (provide screening in 'curtain' effect)



STRUCTURE - ELEVATION



Typical Imagery / Inspiration



PUBLIC ART PROPOSAL

Aluminium post 200mm dia. (powdercoated silver, red & orange

Timber post 200mm dia. painted red & orange

Change in material/colour indicats levels of interesting facts about the environment, and locality ie. Yearly rainfall levels, height of 100 year flood, anual sunshine hours etc.



MATERIALITY  
Bringing the two 'worlds' together Modern and Natural through form and materiality,

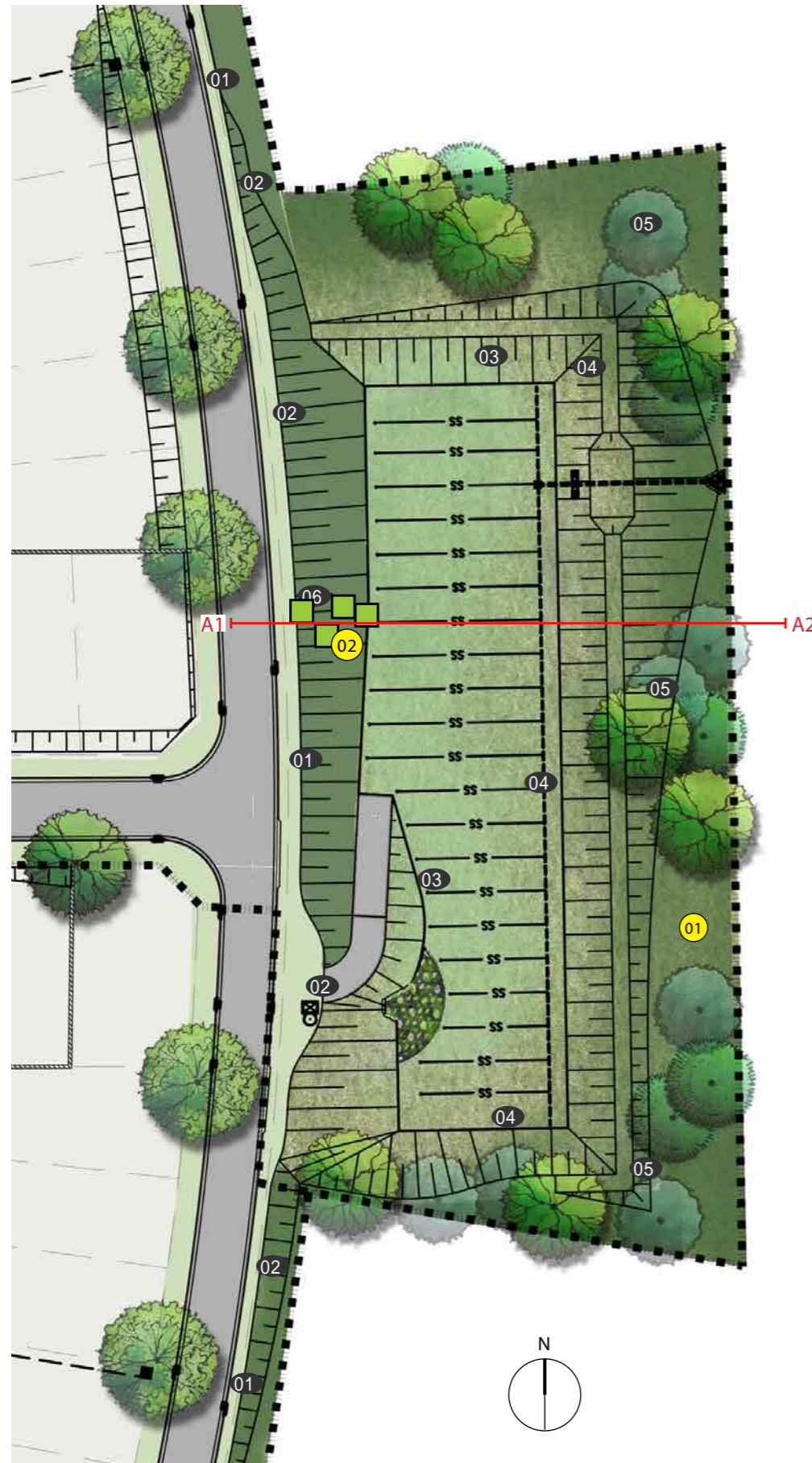


## Typical Imagery

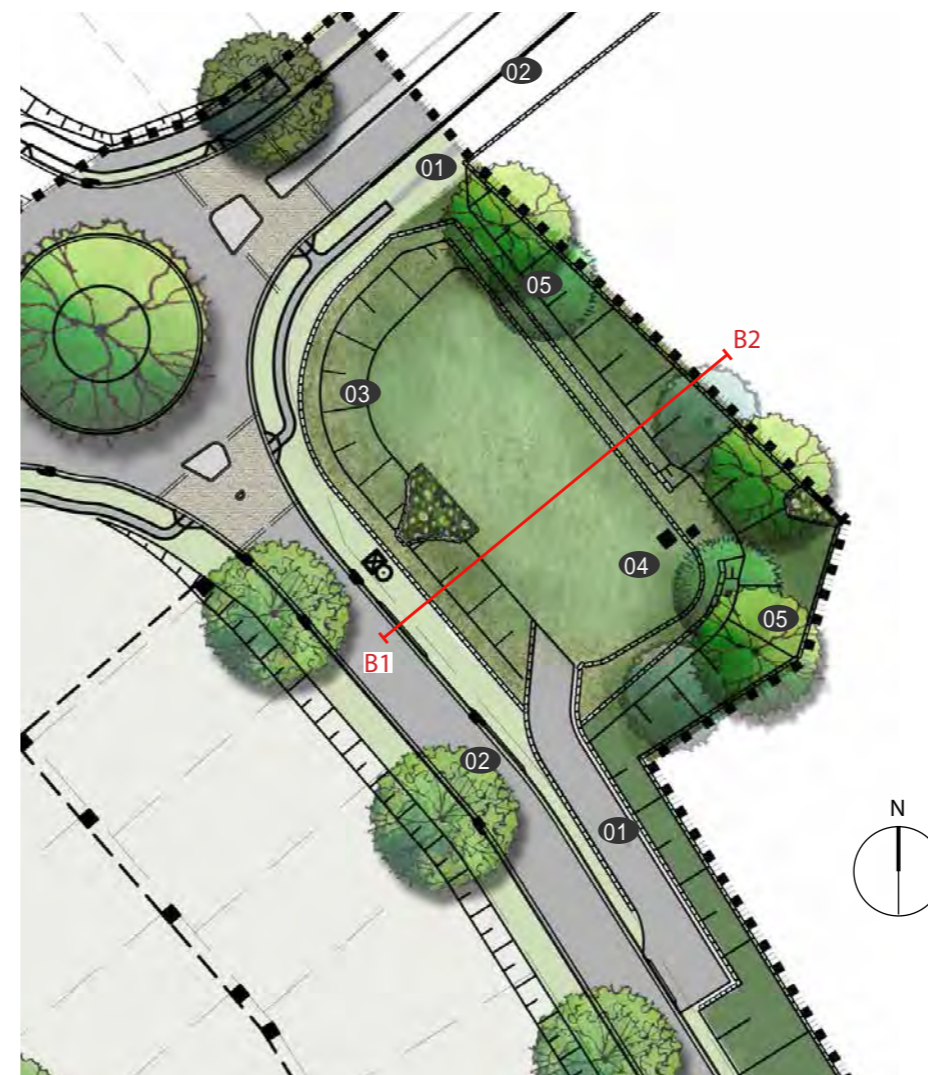


- 01 MANICURED TURF TO ROAD VERGE
- 02 STREET TREES (AS PER TREE DIAGRAM)
- 03 LOW MAINTAINANCE GRASS /WATER QUALITY PLANTING
- 04 LOW GRASSES PLANTING TO PERIPHERY OF PLANTING ZONE
- 05 GROUND COVER AND LOW SHRUB PLANTING TO BASE OF TREES TO PERIMETER OF SITE
- 06 'GRASS' SCULPTURAL ELEMENT

- PROPOSED EVERGREEN TREES
- PROPOSED FLOWERING TREES
- PROPOSED DECIDUOUS TREES



AREA F - DETENTION BASIN  
1:400 @ A3

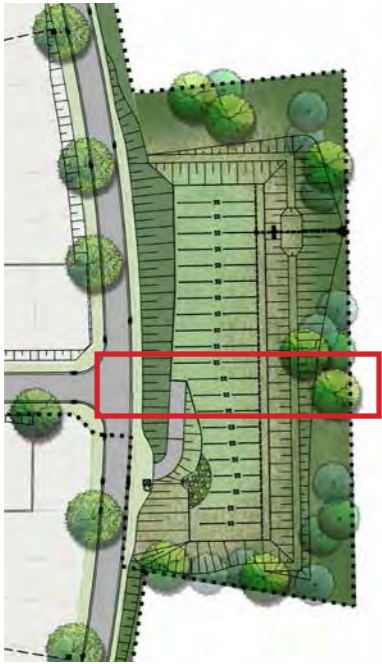


AREA G - DETENTION BASIN  
1:400 @ A3

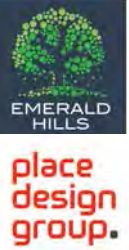


Location Plan

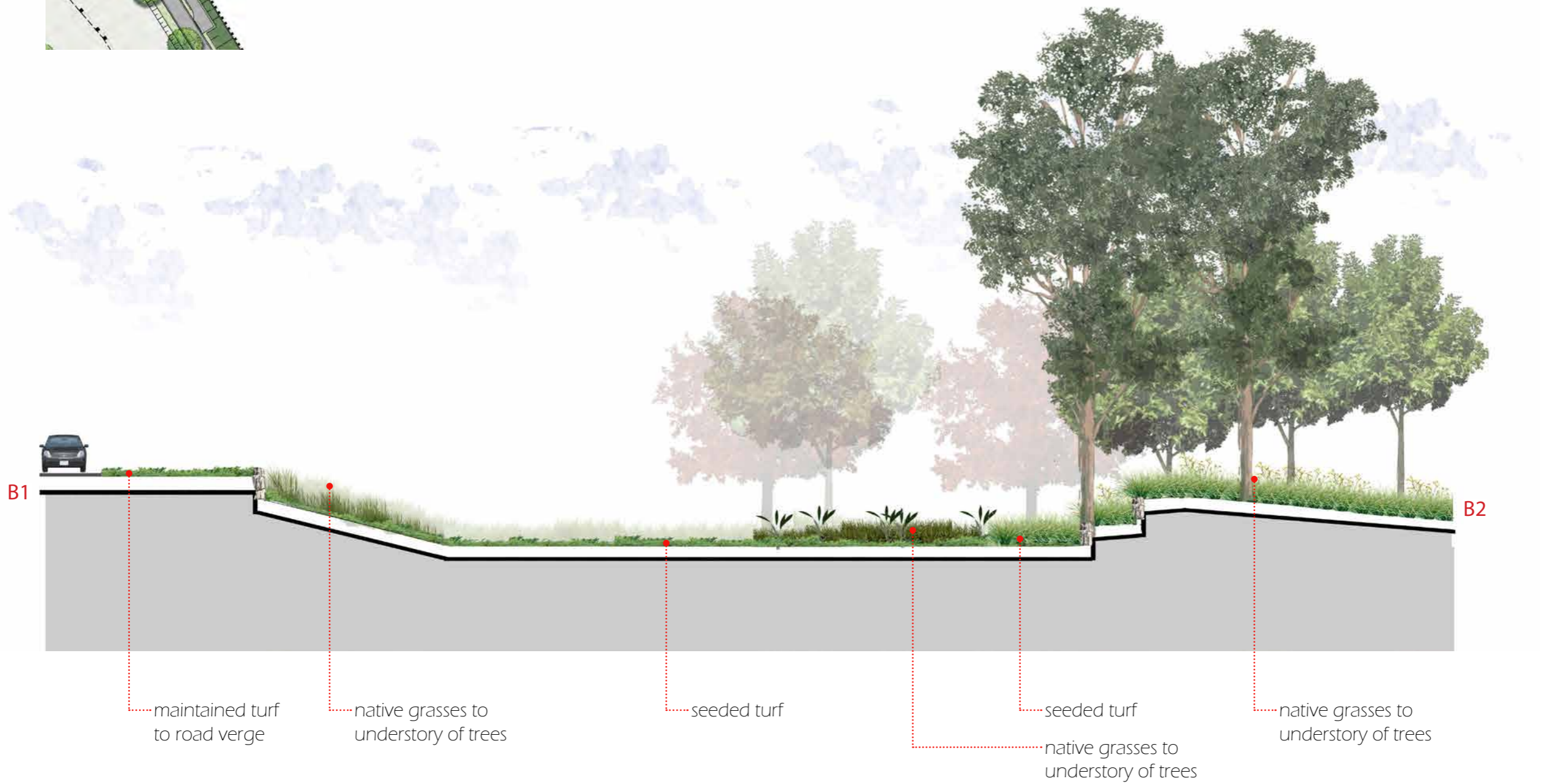
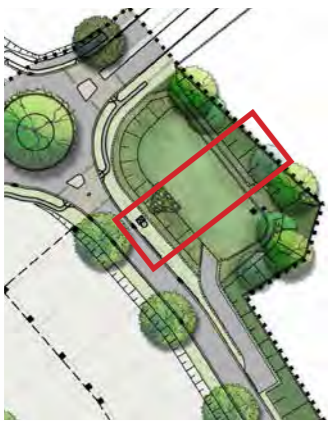




EMERALD HILLS  
Stage 2 - 6  
Landscape DA Package  
REV. D AUGUST 2015



DETENTION BASIN (AREA F) SECTION A  
1:100 @ A3



DETENTION BASIN (AREA G) SECTION B  
1:100 @ A3



Typical Imagery



- 01 MANICURED TURF TO ROAD VERGE
- 02 NATIVE GRASSES TO BASE OF BASIN
- 03 GRASSES & LOW SHRUB PLANTING TO UNDERSTORY OF TREES
- 04 'GRASS' SCULPTURE ELEMENTS TO MATCH ELSEWHERE IN SITE

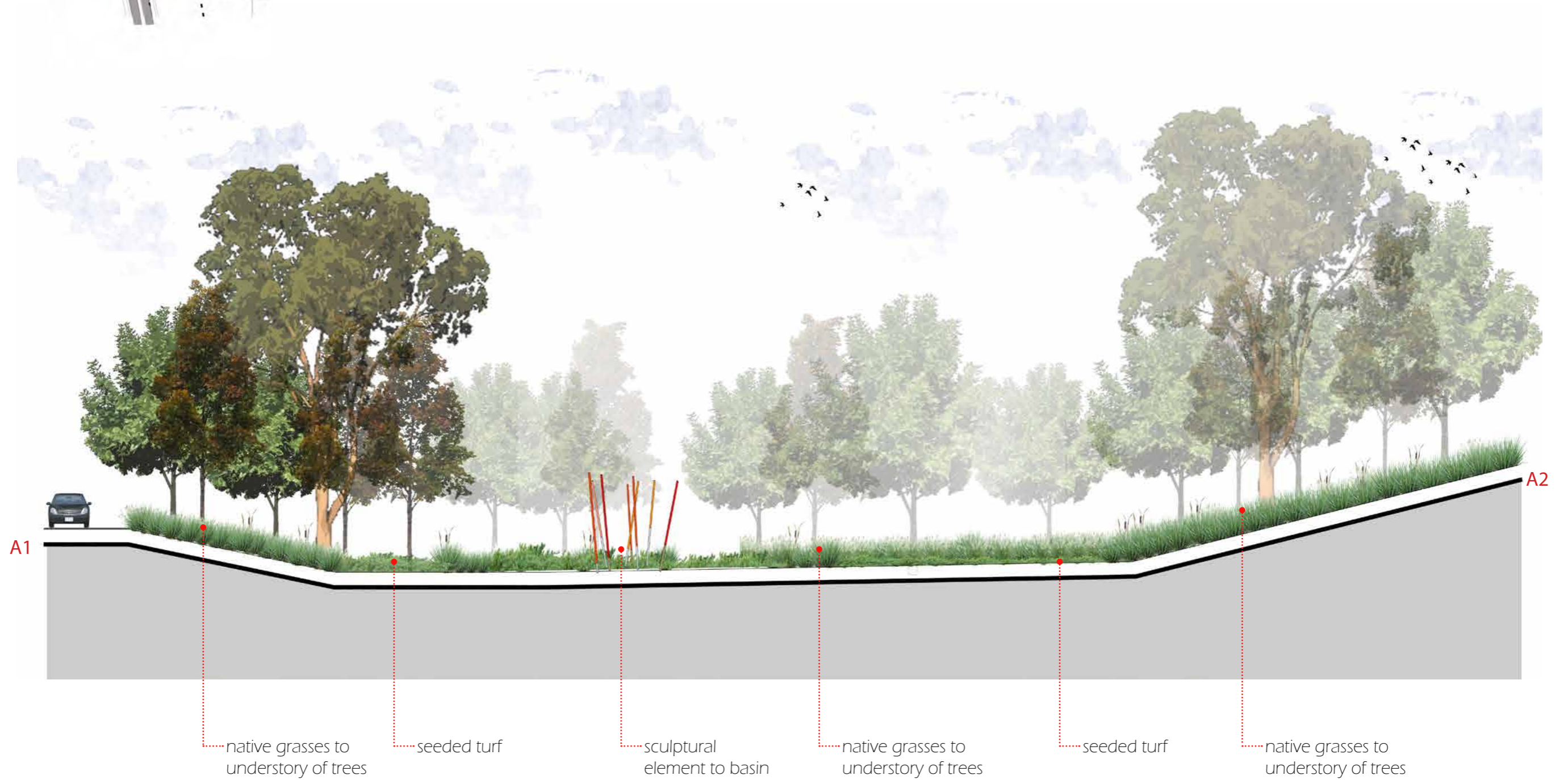


PROPOSED EVERGREEN NATIVE TREES



Location Plan

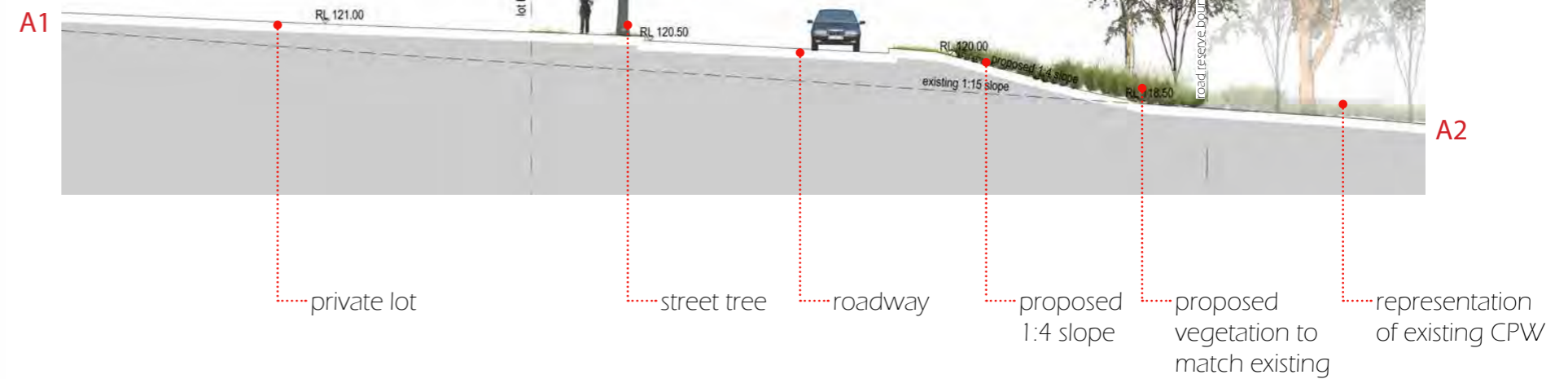




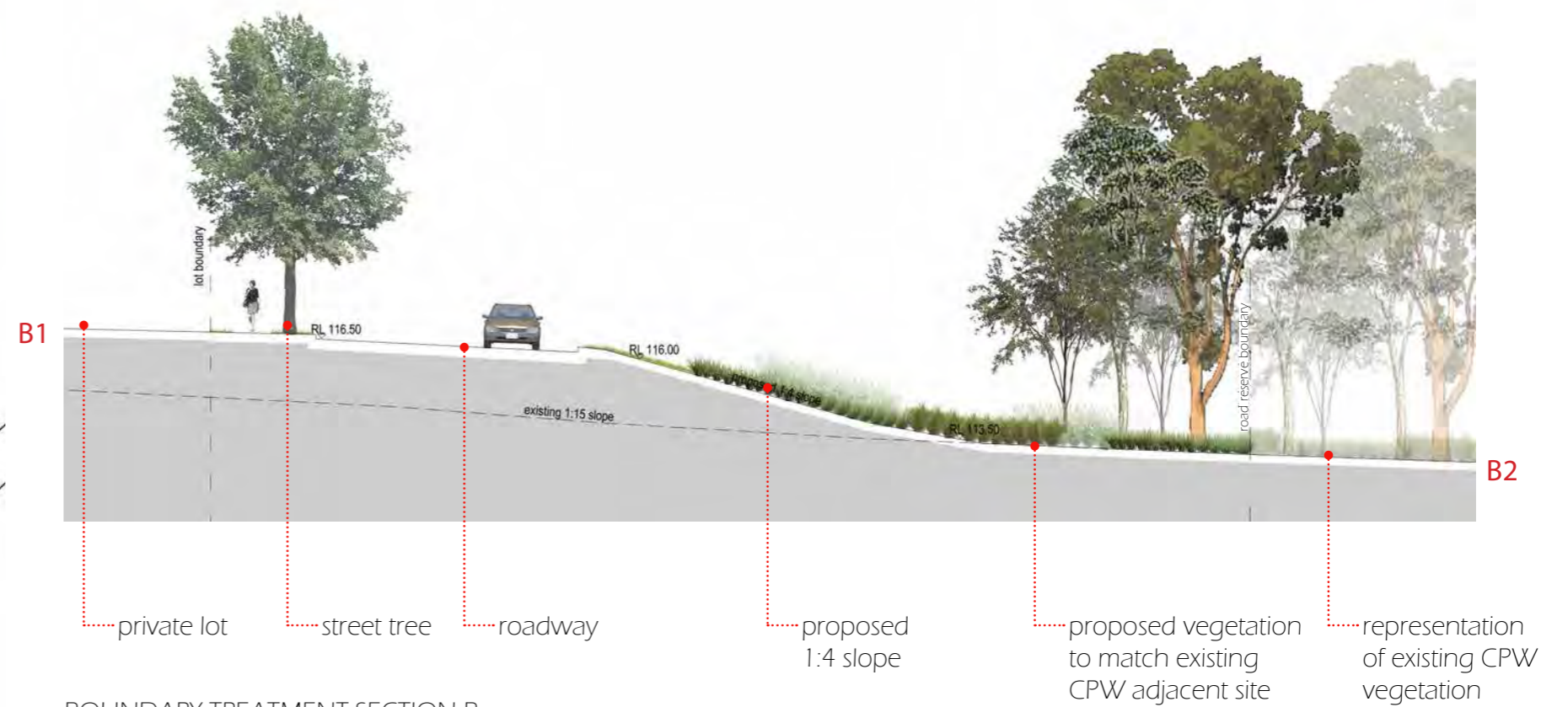
DETENTION BASIN SECTION A  
1:200 @ A3



place  
design  
group.



BOUNDARY TREATMENT SECTION A  
1:200 @ A3



BOUNDARY TREATMENT SECTION B  
1:200 @ A3



Stages 2&3



Stages 4,5 & 6

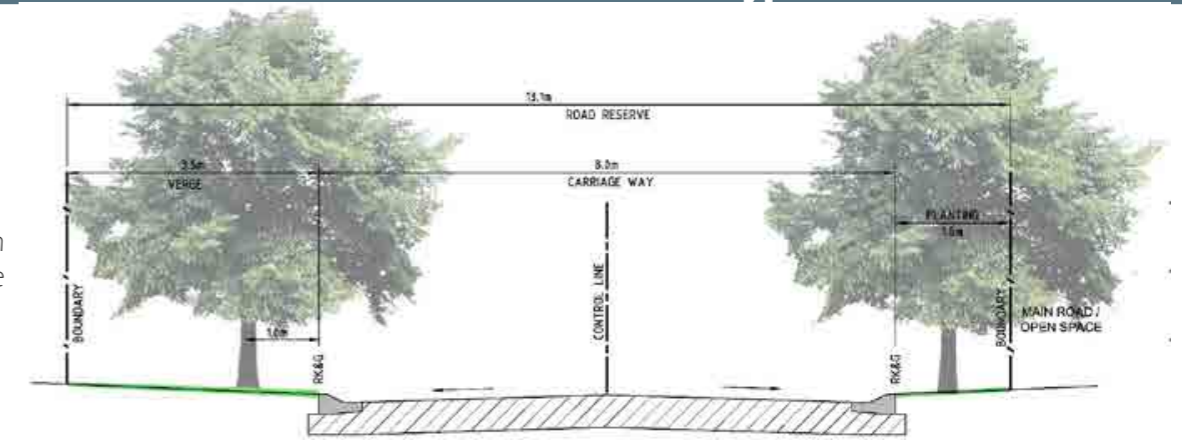
## Streetscape Legend

- Local Road
- Access Street
- Collector Road
- Collector Road with Median
- Entry / Exit Collector Road

## Note:

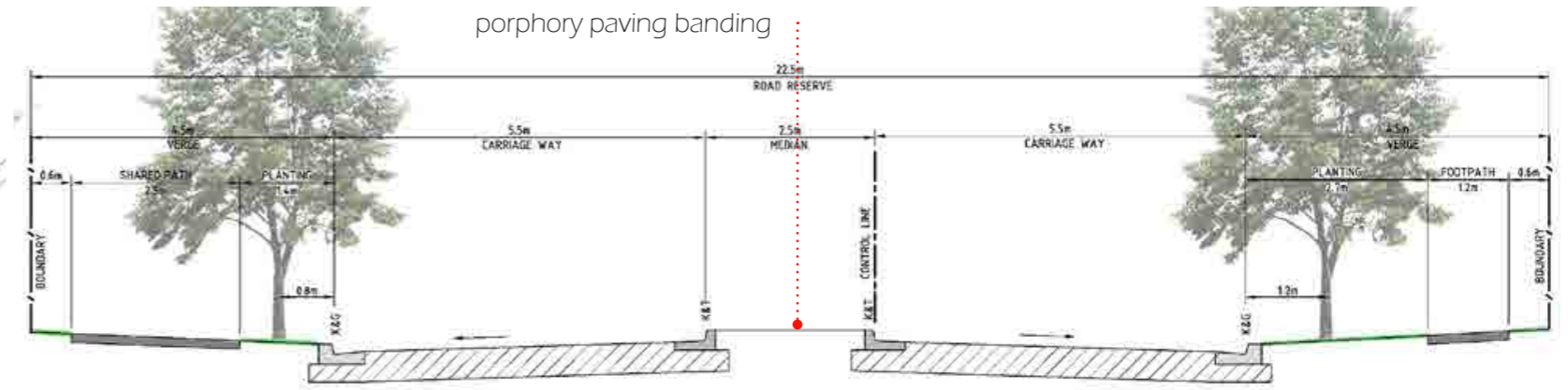
- 1- Trees are positioned at approximately 25 m centres - to be determined by final light column and driveway position.
- 2- Verges will be turf to council specification.

Note: Access Street when adjacent to park areas, to be 1 side of trees only.

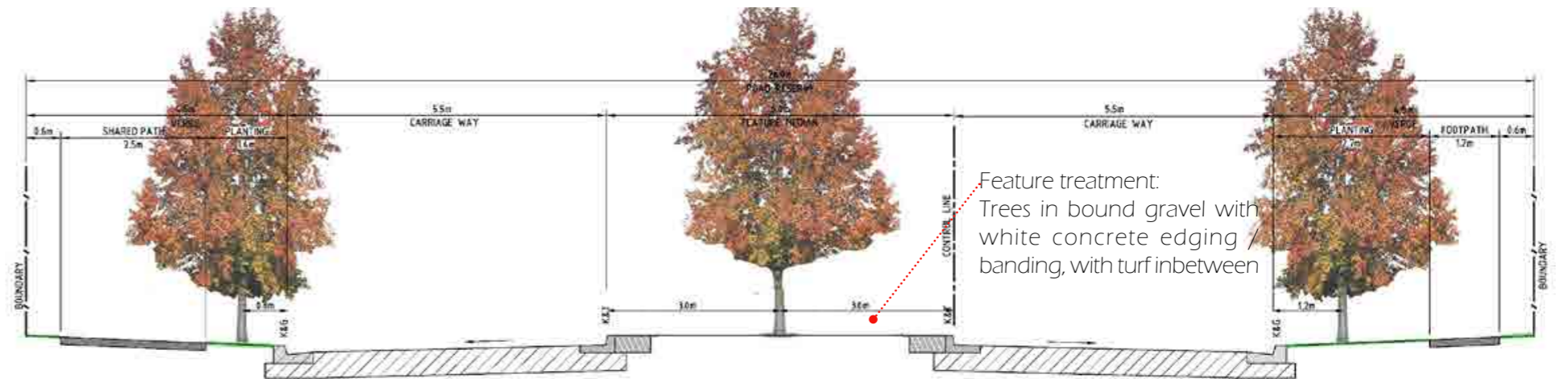


TYPICAL SECTION - ACCESS STREET

Median with concrete & porphory paving banding

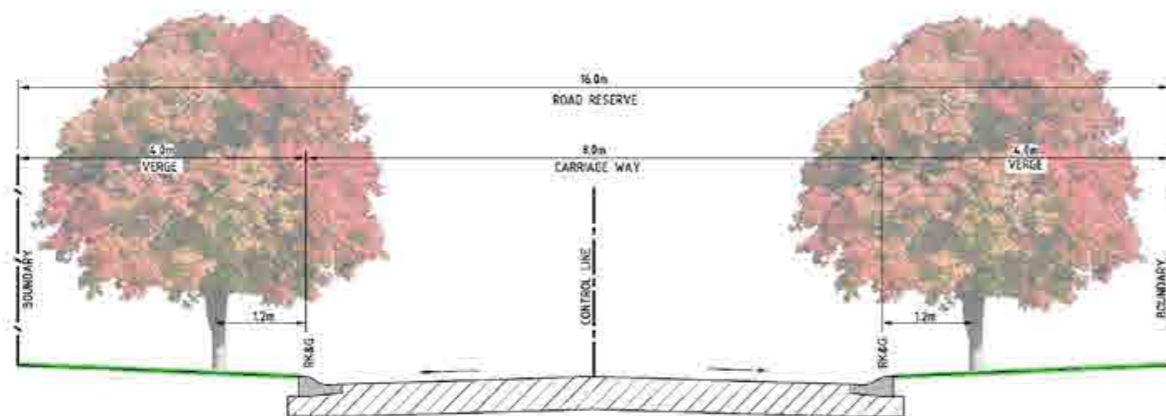


TYPICAL SECTION - COLLECTOR ROAD WITH MEDIAN

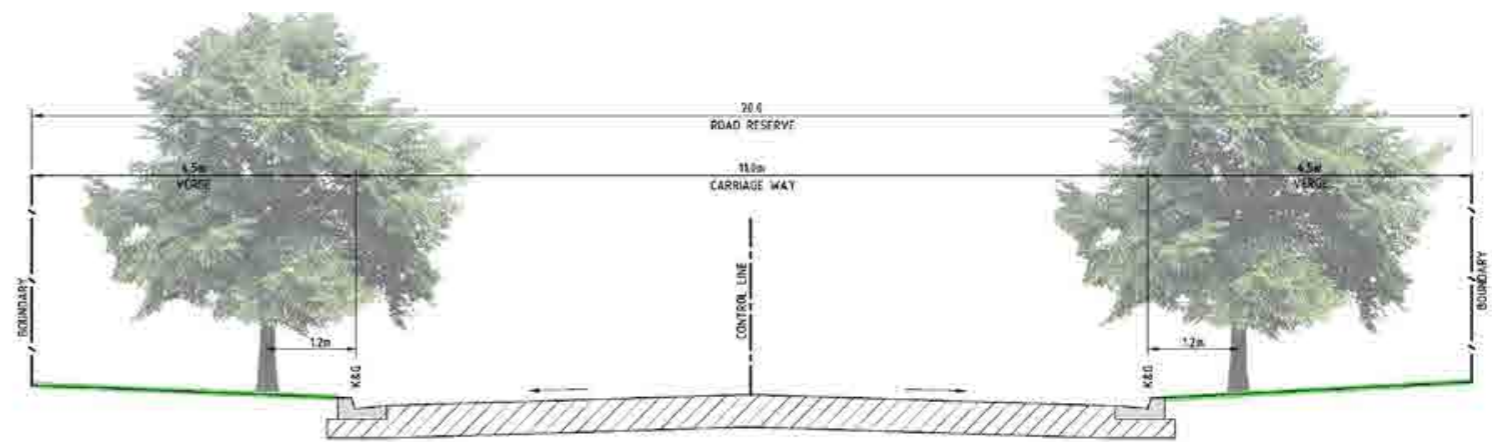


TYPICAL SECTION - ENTRY/EXIT COLLECTOR ROAD

Feature treatment:  
Trees in bound gravel with  
white concrete edging /  
banding, with turf inbetween



TYPICAL SECTION - LOCAL ROAD



TYPICAL SECTION - COLLECTOR ROAD

### Legend

## Dual Pathways

2.5m Dual Path (VPA)



2.5m Dual Path



## Pedestrian Path

1.5m Pedestrian Path



1.2m Pedestrian Path



## Fencing Legend



**Fence Type 1**  
Sandstone Post with Colourbond panels



**Fence Type 3**  
2.1m high chain link and barb wire fencing



**Fence Type 3a**  
1.2 Estate fence-Post & rail (three) fence (colour dark grey/black) with wire mesh fixed to rear face (removing scalability)



**Fence Type 4**  
1m high white picket fence



**Fence Type 5**  
Retain existing stock proof 3 strand wire fence, installed on perimeter of adjacent lot



**Fence Type 7**  
1.2m high black chain link fencing



## Master Plan - Fence Locations



\* BASIN FENCING TO BE CONFIRMED DURING DETAILED DESIGN PHASE

Legend

● Park seats & Benches - Timber and Aluminium



● Rubbish Bins (Timber and Aluminium)



● Bike Racks (Mild Steel and Aluminium)



● Drinking Fountain (Aluminium)



● Bollards (Aluminium)



● Removable Bollards



## classic plaza bench

Sep 2014

CMP4

## General Description

Classic, contoured bench supported by strong marine-grade stainless steel frames.

## Dimensions (mm)

625W x 470H x 1750L

## Specifications

Tick one box per category to specify your project.

Seat Type:  
CMP4

Battens (mm):

40W x 20D x 1750L

☐ Eco-accredited Hardwood Oiled\*

☐ Aluminium Anodised

\*Street Furniture uses sustainably sourced timber from certified managed forests.

Mounting:

☐ Surface

☐ Subsurface

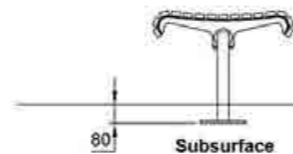
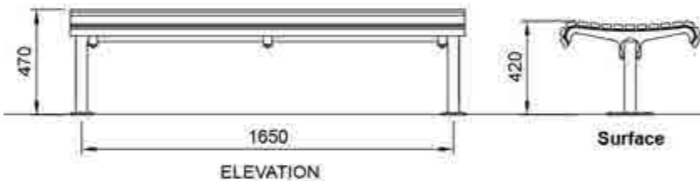
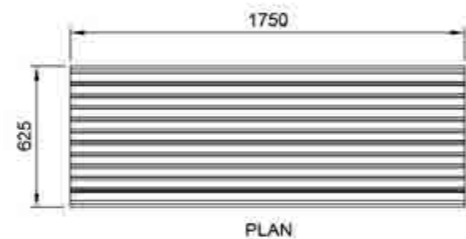
Powder Coat Finish:

Please refer to Colour Chart

*Tailored options are available for all Street Furniture products. Additional fees and lead times may apply.*

## Related Products

Classic Plaza, Promenade and Galleria products



street  
furniture  
Australia

1800 027 799 streetfurniture.com

© Street Furniture Australia Pty Limited 2014. All rights reserved.  
This technical sheet is copyright and owned by Street Furniture Australia Pty Limited ACN 070 910 100. You may download and use this technical sheet in unaltered form only for tendering our products to current or potential new clients. All rights are reserved. Any use of our technical sheet for purposes other than for the abovementioned purpose, is strictly prohibited without the prior written permission of Street Furniture Australia Pty Limited, Level 1, 52-58 William Street, East Sydney NSW 2011. Street Furniture Australia Pty Limited reserves the right to make modifications to product specifications without prior notice.

## classic plaza seat

Sep 2014

CMP1

## General Description

Classic, contoured seat supported by strong marine-grade stainless steel frames.

## Dimensions (mm)

705W x 800H x 1750L

## Specifications

Tick one box per category to specify your project.

Seat Type:  
CMP1

Battens (mm):

40W x 20D x 1750L

☐ Eco-accredited Hardwood Oiled\*

☐ Aluminium Anodised

\*Street Furniture uses sustainably sourced timber from certified managed forests.

Mounting:

☐ Surface

☐ Subsurface

Arms:

☐ None

☐ Angle Powder Coated (Pair)

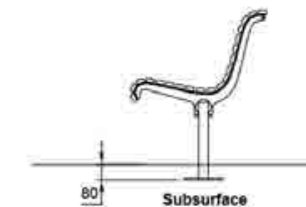
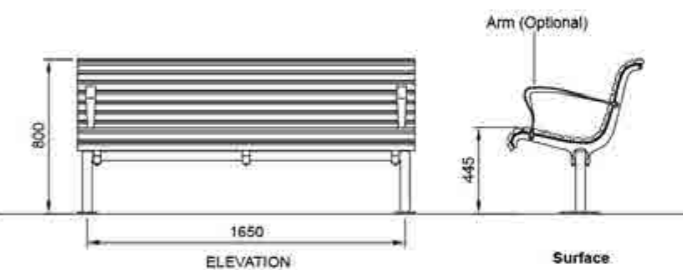
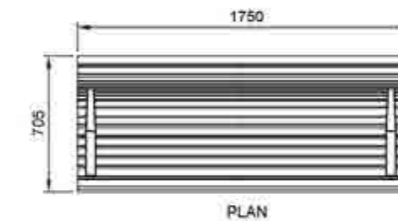
Powder Coat Finish:

Please refer to Colour Chart

*Tailored options are available for all Street Furniture products. Additional fees and lead times may apply.*

## Related Products

Classic Plaza, Promenade and Galleria products



street  
furniture  
Australia

1800 027 799 streetfurniture.com

© Street Furniture Australia Pty Limited 2014. All rights reserved.  
This technical sheet is copyright and owned by Street Furniture Australia Pty Limited ACN 070 910 100. You may download and use this technical sheet in unaltered form only for tendering our products to current or potential new clients. All rights are reserved. Any use of our technical sheet for purposes other than for the abovementioned purpose, is strictly prohibited without the prior written permission of Street Furniture Australia Pty Limited, Level 1, 52-58 William Street, East Sydney NSW 2011. Street Furniture Australia Pty Limited reserves the right to make modifications to product specifications without prior notice.



## frame bin enclosure 140K

WBE-F140K

Aug 2013

## General Description

An attractive enclosure for the common 140K wide wheeled bin.

Frame bin enclosures are fabricated to order.

## Dimensions (mm)

Single 705W x 705D x 1190H  
Dual 1415W x 705D x 1190H  
Triple 2125W x 705D x 1190H

## Specifications

Tick one box per category to specify your product.

## BIN ENCLOSURE TYPE:

- ☐ WBE-F140K Single  
☐ WBE-F140K Dual  
☐ WBE-F140K Triple

## ROOF:

- ☐ Angle  
☐ Curve

## FRAME:

- ☐ Aluminium Powder Coated\*  
☐ Stainless Steel 304 Linished  
☐ Stainless Steel 316 Linished

## PANELS:

- ☐ Aluminium Powder Coated\*  
☐ Stainless Steel 304 Linished  
☐ Stainless Steel 316 Linished  
☐ Timber Vertical Battens\*\*  
☐ Alum Woodgrain Vertical Battens\*

\*Please refer to Colour Chart.

\*\*Street Furniture uses sustainably sourced timber from certified managed forests.

## PERFORATION TYPE:

- Not applicable to battens  
☐ Solid  
☐ Holes  
☐ Slots

## SIGNAGE:

- ☐ Garbage  
☐ Recycle  
☐ Paper  
☐ Empties  
☐ None

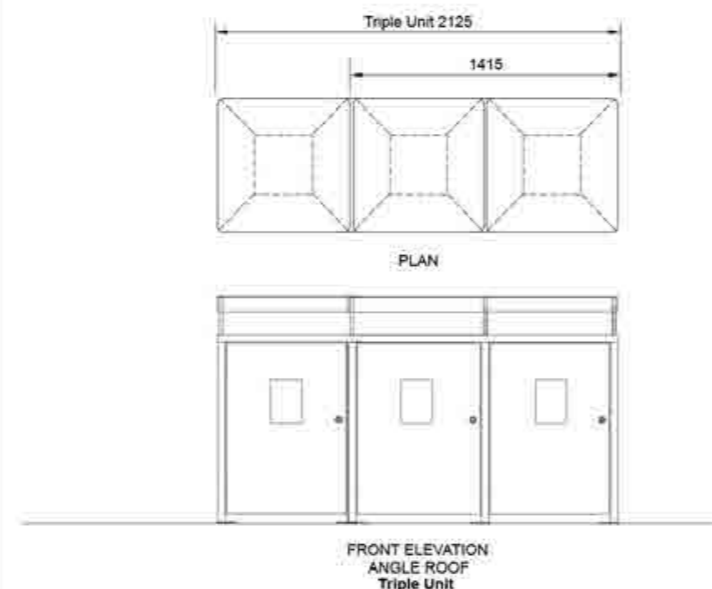
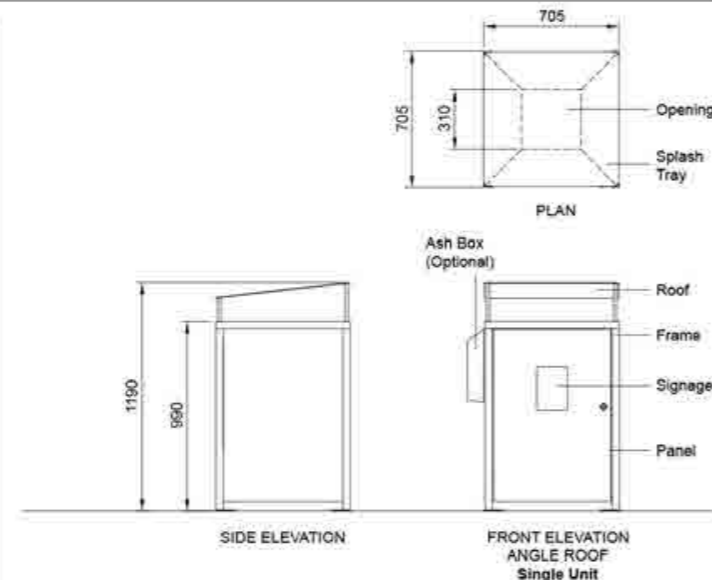
## MOUNTING:

- ☐ Surface (Standard)  
☐ Subsurface  
☐ Freestanding

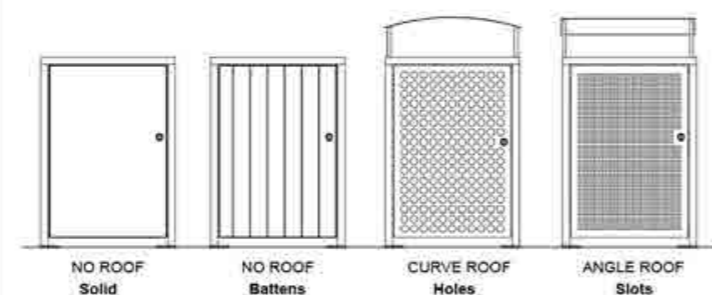
## EXTRAS:

- ☐ Anti-graffiti coating  
☐ Ash box  
☐ Adjustable feet

Please contact your sales representative for tailored options.  
Additional charges and lead times may apply.



## Roof and Body Options



© Street Furniture Australia Pty Limited 2013. All rights reserved.

This technical sheet is copyright and owned by Street Furniture Australia Pty Limited ACN 070 910 100. You may download and use this technical sheet in unaltered form only for tendering our products to current or potential new clients. All rights are reserved. Any use of our technical sheet for purposes other than for the above-mentioned purpose, is strictly prohibited without the prior written permission of Street Furniture Australia Pty Limited, Level 1, 52-58 William Street, East Sydney NSW 2011. Street Furniture Australia Pty Limited reserves the right to make modifications to product specifications without prior notice.

**street furniture**

1800 027 799 [streetfurniture.com](http://streetfurniture.com)

## blade bike stand

B12

July 2011

## General Description

A bicycle and bollard in one, this slim U-shaped pipe fits securely and stylishly in a cast aluminium base.

## Dimensions (mm)

38W x 875H

## Specifications

BIKE STAND TYPE:  
B12

## ø42 PIPE:

- ☐ Galvanised Mild Steel  
☐ Stainless Steel

## BASE:

Cast Aluminium Powder Coated\*  
\*Refer to Colour Chart

## MOUNTING:

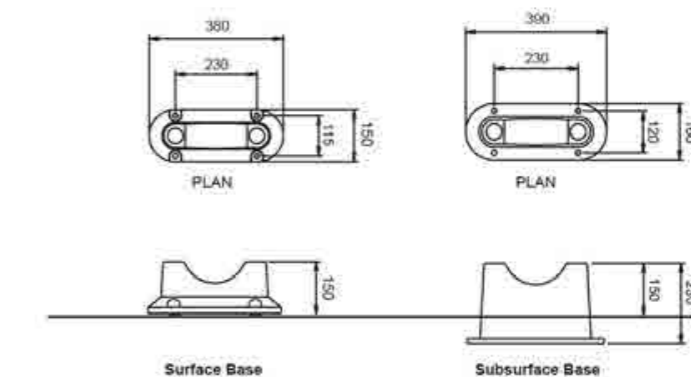
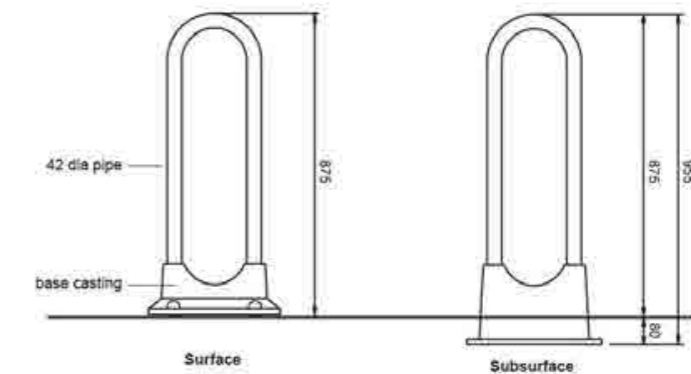
- ☐ Surface  
☐ Subsurface

## Related Products

Blade Ash Receptacle, Blade Ash Bollard,  
Blade Bollard

The above specifications are for Street Furniture standard products. For customisation requirements, please contact a sales representative.

Some options incur a fee and longer lead time.



© Street Furniture Australia Pty Limited 2011. All rights reserved.

This technical sheet is copyright and owned by Street Furniture Australia Pty Limited ACN 070 910 100. You may download and use this technical sheet in unaltered form only for tendering our products to current or potential new clients. All rights are reserved. Any use of our technical sheet for purposes other than for the above-mentioned purpose, is strictly prohibited without the prior written permission of Street Furniture Australia Pty Limited, Level 1, 52-58 William Street, East Sydney NSW 2011. Street Furniture Australia Pty Limited reserves the right to make modifications to product specifications without prior notice.

**street furniture**

1800 027 799 [streetfurniture.com](http://streetfurniture.com)

# arqua fountain

DF4

May 2013

## General Description

The Arqua Fountain is a sculptural water bubbler that is both functional and beautiful.

Street Furniture has recently launched a new and improved version to reach a higher level of manufacturing quality. Using extra-strong valve components (typically found in prisons) and the latest in metal fabrication technology, the latest Arqua Fountain offers excellent whole-of-life value and product longevity.

The Arqua Fountain is a wheelchair-friendly product. A full accessibility report is available for downloading from the website.

For material and installation details, please contact your sales representative.

## Dimensions (mm)

Ø450W x 1210H Fountain DF4 Body  
Ø450W x 145H Sump

## Specification

FOUNTAIN TYPE:  
DF4

BODY:  
Fabricated Aluminium Powder Coated\*

ANTI-GRAFFITI COATING:  
☐ With  
☐ Without

\*Please refer to Colour Chart

SPOUT AND BUTTON:  
Marine Grade Stainless Steel  
Bright Polished

PLUMBING:  
- 6mm flow of drinking water  
- Max. water pressure 620kpa

MOUNTING:  
Subsurface mounting polycrystalline pit with hard anodised aluminium cover plate to suit most pavements.

Arqua products have a maximum working pressure of 6 bar (87 psi/ 0.6MPa). Customer or installer to check pressure and install pressure relief valve on supply side as required.

## Related Products

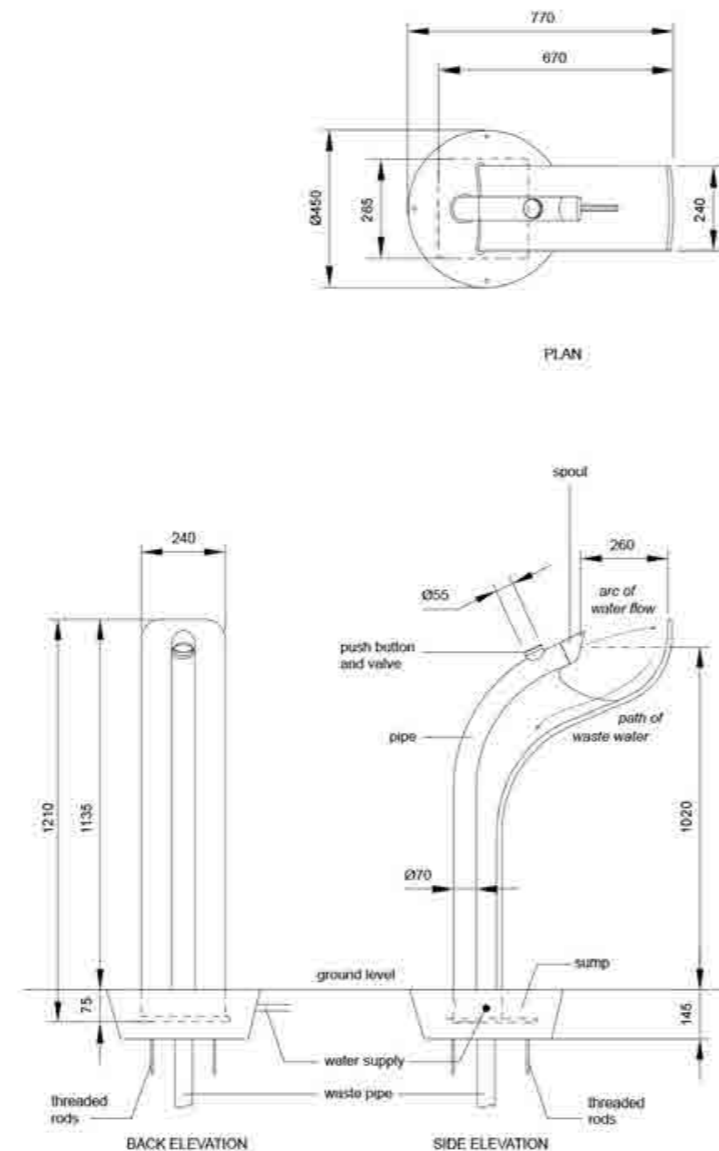
Arqua Pole, Arqua Station

The above specifications are for Street Furniture standard products. For tailored requirements, please contact a sales representative.

Some options incur a fee and require a longer lead time.



1800 027 799 streetfurniture.com



© Street Furniture Australia Pty Limited 2013. All rights reserved.  
This technical sheet is copyright and owned by Street Furniture Australia Pty Limited ACN 070 910 100. You may download and use this technical sheet in unaltered form only for tendering our products to current or potential new clients. All rights are reserved. Any use of our technical sheet for purposes other than for the above-mentioned purpose, is strictly prohibited without the prior written permission of Street Furniture Australia Pty Limited, Level 1, 52-58 William Street, East Sydney NSW 2011. Street Furniture Australia Pty Limited reserves the right to make modifications to product specifications without prior notice.

Aug 2013

## General Description

Wide bollards in aluminium or stainless steel body come with a choice of two collars and two cast aluminium heads.

## Dimensions (mm)

Ø165 x 790 to 965H

## Specifications

Tick one box per category to specify your product.

## BOLLARD TYPE:

- ☐ B8F Flat, no collar
- ☐ B3F Flat, single collar
- ☐ B2F Flat, double collar
- ☐ B3 Dome, single collar
- ☐ B2 Dome, double collar

HEAD AND COLLAR:  
Cast Aluminium Polished

PIPE BODY:  
Ø165 x 745mm  
☐ Aluminium Powder Coated\*  
☐ Stainless Steel 316

ANTI-GRAFFITI COATING\*\*:  
☐ With  
☐ Without

\*Please refer to Colour Chart  
\*\*Anti-Graffiti coating not available for stainless steel

## MOUNTING:

- ☐ Surface
- ☐ Subsurface
- ☐ Removable – Surface fixed
- ☐ Removable – In-ground

Tailored options are available for all Street Furniture products. Additional fees and lead times may apply.

## Related Products

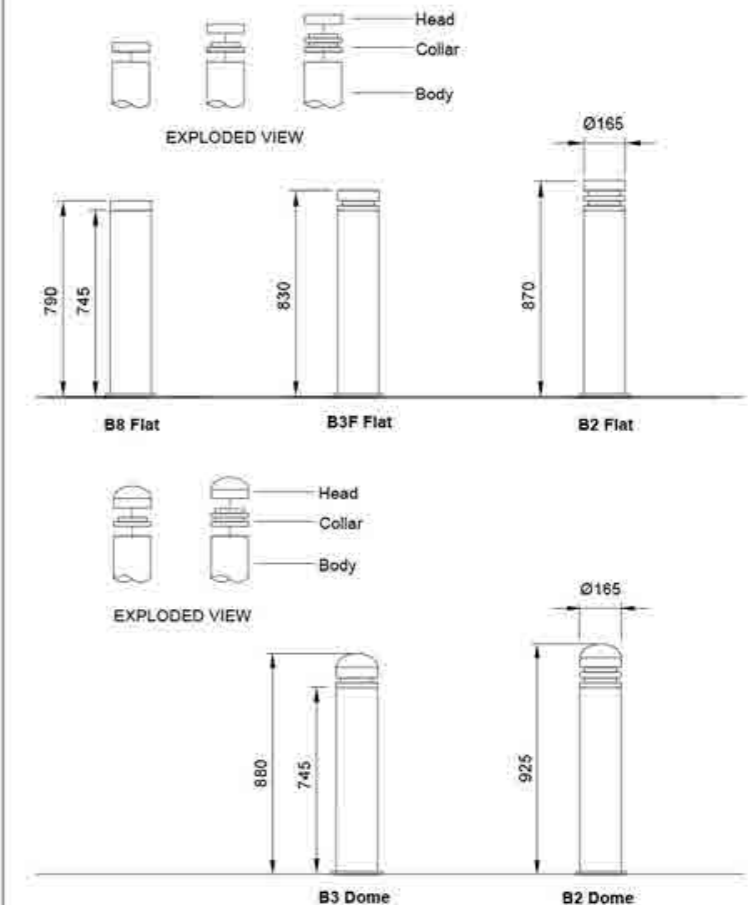
Light Bollard, Wide Drinking Fountain, Arqua Pole



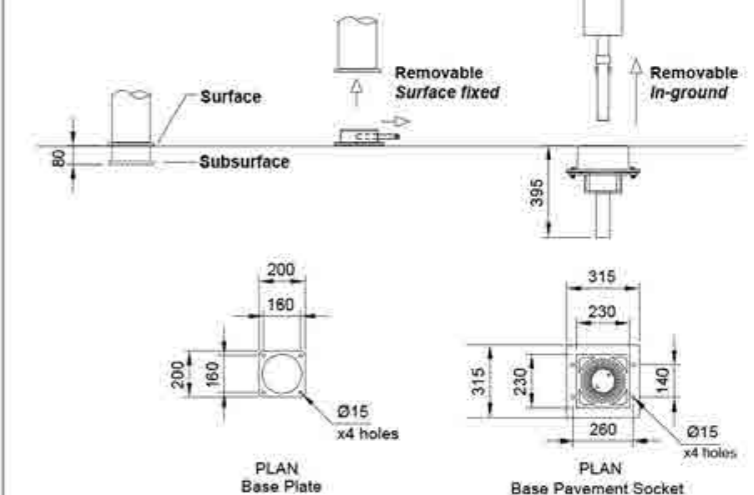
1800 027 799 streetfurniture.com

# wide bollard

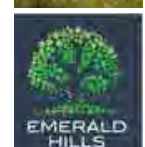
B2, B3 and B8



## Mounting Options



© Street Furniture Australia Pty Limited 2013. All rights reserved.  
This technical sheet is copyright and owned by Street Furniture Australia Pty Limited ACN 070 910 100. You may download and use this technical sheet in unaltered form only for tendering our products to current or potential new clients. All rights are reserved. Any use of our technical sheet for purposes other than for the above-mentioned purpose, is strictly prohibited without the prior written permission of Street Furniture Australia Pty Limited, Level 1, 52-58 William Street, East Sydney NSW 2011. Street Furniture Australia Pty Limited reserves the right to make modifications to product specifications without prior notice.



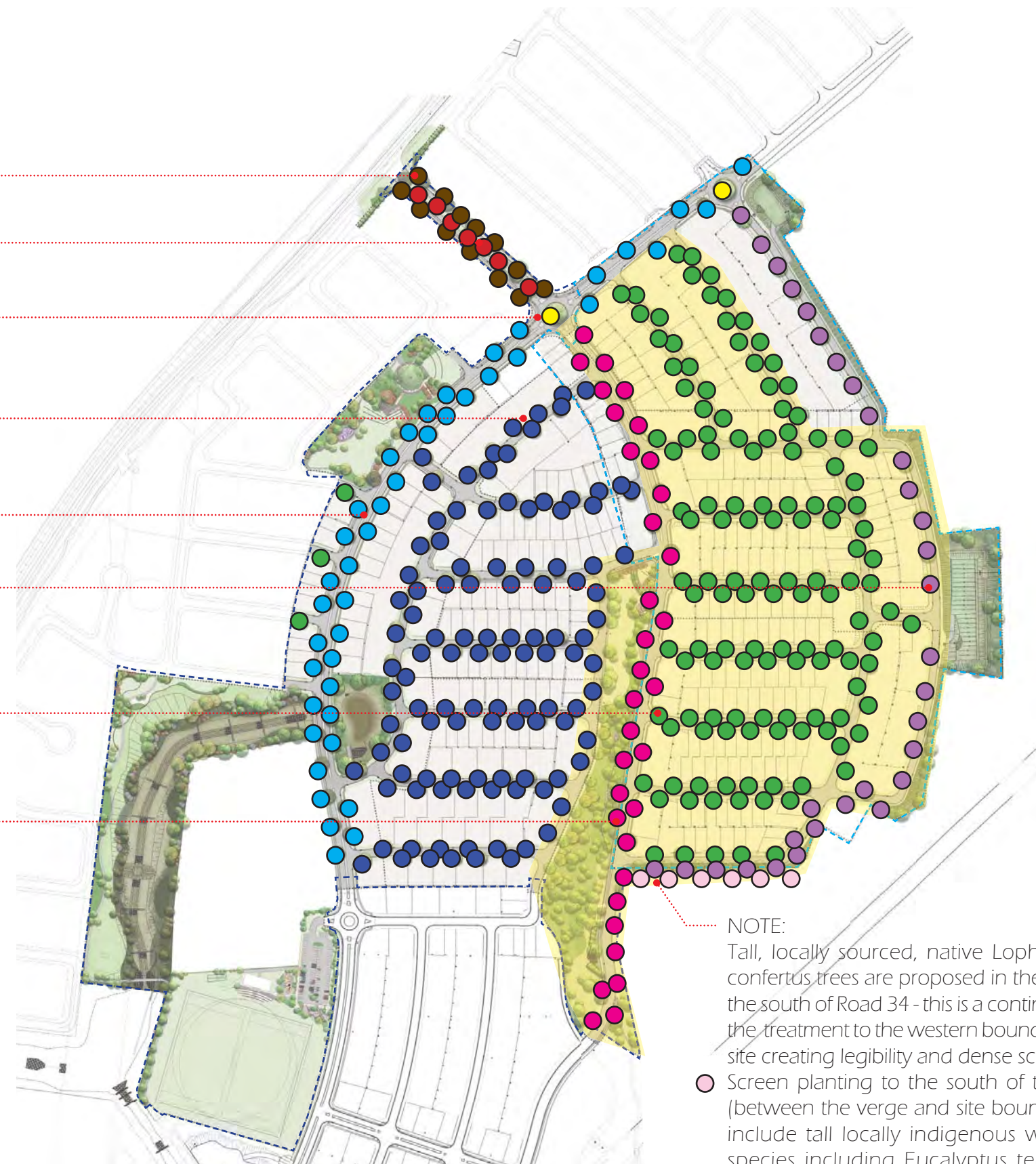
place  
design  
group.



- Entry / Exit Collector Road .....  
Streets - *Lophostemon confertus*
- Entry / Exit Collector Road .....  
*Ficus rubiginosa*
- Round-a-bout .....  
*Ficus rubiginosa*
- Local Road B .....  
*Pyrus calleryana* 'Bradford'
- Collector Road .....  
*Lophostemon confertus*
- Access Street .....  
(within Scenic Character protection area)  
*Lophostemon confertus*
- Local Road A .....  
(Scenic Character protection area)  
*Magnolia grandiflora* 'Exmouth'
- Collector Road .....  
(within Scenic Character protection area)  
*Brachychiton populneus*

Scenic Character Protection Area  
(Camden Council DCP 2011)

NOTE:  
Trees to be at spacings between 20-25m,  
varying slightly due to width of individual lots  
and the allowance for driveways.



NOTE:  
Tall, locally sourced, native *Lophostemon confertus* trees are proposed in the verge to the south of Road 34 - this is a continuation of the treatment to the western boundary of the site creating legibility and dense screening.  
○ Screen planting to the south of the verge (between the verge and site boundary) will include tall locally indigenous woodland species including *Eucalyptus tereticornis* (where room is sufficient), *Melaleuca decora* / *stypelioides*, *Callistemon viminalis*, *syzigium* spp and *lomandra longifolia*.

STREETSCAPE				
BOTANICAL NAME	COMMON NAME	HEIGHT	SPACING	POT SIZE
MAIN BOULEVARD, COLLECTOR ROAD TREES				
Brachychiton populenus	Kurrajong	12m	As Shown	400L
Ficus rubiginosa	Port Jackson Fig	18m	As Shown	800L
Fraxinus pennsylvanica 'Cimmaron'	Cimmaron	13m	As Shown	800L
Fraxinus pennsylvanica 'Urbanite'	Urbanite	11m	As Shown	400L
Lophostemon confertus	Bruswh Box	15m	As Shown	400L
LOCAL STREET TREES				
Magnolia grandiflora 'Exmouth'	Evergreen Magnolia	8m	As Shown	200L
Pyrus calleryana 'Bradford'	Bradford Pear	12m	As Shown	200L
SHRUBS				
Acmena smithii minor	Lilly Pilly	1m	5/m2	150mm
Gardenia radicans 'Dwarf'	Gardenia Dwarf	0.3m	5/m2	150mm
Melaleuca 'Claret Tops'	Claret Tops Paperbark	1.5m	5/m2	150mm
Philodendron 'Xanadu'	Philodendron	1.2m	5/m2	150mm

RIPARIAN CORRIDOR AND DETENTION BASIN				
BOTANICAL NAME	COMMON NAME	HEIGHT	SPACING	POT SIZE
TREES AND SHRUBS (From VMP)				
*Casuarina glauca	She Oak	15m	Refer VMP	45L
*Eucalyptus amplifolia	Cabbage Gum	20m	Refer VMP	100L
*Eucalyptus moluccana	Gum-topped Box	20m	Refer VMP	100L
*Eucalyptus tereticornis	Forest Red Gum	20m	Refer VMP	100L
*Bursaria spinosa	Australian Blackthorn	20m	Refer VMP	100L
*Dodonea viscosa	Hopbush	20m	Refer VMP	100L
*Indigofera australis	Australian indigo	20m	Refer VMP	100L
GRASSES AND GROUND COVERS (From VMP)				
*Aristida ramosa	Aristida	1.0m	Refer VMP	75mm Tube
*Aristida vagans	Threeawn Spear Grass	0.6m	Refer VMP	75mm Tube
*Atriplex semibaccata	Berry Saltbush	0.2m	Refer VMP	75mm Tube
*Brunoniella australis	Blue Trumpet	0.2m	Refer VMP	75mm Tube
*Carex appressa	Tall Sedge	0.8m	Refer VMP	75mm Tube
*Chloris truncata	Australian windmill grass	0.2m	Refer VMP	75mm Tube
*Chloris ventricosa	Pump windmill grass	0.8m	Refer VMP	75mm Tube
*Dianella longifolia	Pale Flax Lily	0.6m	Refer VMP	75mm Tube
*Dichondra repens	Kidney grass	0.7m	Refer VMP	75mm Tube
*Einadia hastata	Saloop	0.5m	Refer VMP	75mm Tube
*Einadia nutans	Climbing saltbush	0.7m	Refer VMP	75mm Tube
*Eremophila debilis	Winter apple	0.2m	Refer VMP	75mm Tube
*Glycine clandestina	Twining glycine	0.2m	Refer VMP	75mm Tube
*Glycine tabacina	Pea glycine	0.2m	Refer VMP	75mm Tube
*Hardenbergia violacea	Purple coral pea	0.8m	Refer VMP	75mm Tube
*Juncus usitatus	Common Rush	0.7m	Refer VMP	75mm Tube
*Lachnagrostis stipoides	Tall wheat-grass	0.7m	Refer VMP	75mm Tube
*Microlaena stipoides	Weeping grass	0.7m	Refer VMP	75mm Tube
*Poa labillardieri	Common tussock grass	0.3m	Refer VMP	75mm Tube
*Themeda australis	Kangaroo Grass	0.7m	Refer VMP	75mm Tube
MACROPHYTES (Water Quality Basin)				
Baumea articulata	Jointed Twig Rush	0.6m	5/m²	125x50x50
Baumea rubiginosa	Soft Twig Rush	0.6m	5/m²	125x50x50
Bolboschoenus fluviatilis	Stream Club Rush	1.5m	5/m²	125x50x50
Carex appressa	Tall Sedge	0.6m	5/m²	125x50x50
Eleocharis acuta	Common Spike Rush	0.6m	5/m²	125x50x50
Isoplepis inundata	Swamp Club Rush	0.7m	5/m²	125x50x50
Juncus usitatus	Common Rush	0.7m	7/m²	125x50x50
Juncus kraussii	Sea Rush	0.7m	5/m²	125x50x50
Schoenoplectus validus	River Club Rush	1.0m	5/m²	125x50x50

PARK AREAS AND ENTRY STATEMENT				
BOTANICAL NAME	COMMON NAME	HEIGHT	SPACING	POT SIZE
TREES				
Brachychiton discolor	Lacebark Kurrajong	15m	As Shown	100L
Cupaniopsis anacardioides	Tuckeroo	10m	As Shown	100L
Elaeocarpus reticulatus	Blueberry Ash	10m	As Shown	100L
Lagerstroemia indica	Crepe Myrtle	12m	As Shown	100L
Magnolia denudata	Yulan Magnolia	7m	As Shown	45L
Melaleuca decora	White Feather Honey Myrtle	7m	As Shown	45L
Melaleuca linarifolia	Flax leaf paperbark	7m	As Shown	45L
Pistacia chinensis	Chinese Pistachia	15m	As Shown	100L
Podocarpus elatus	Illawarra Plum	15m	As Shown	100L
Pyrus calleryana 'Chanticleer'	Ornamental Pear	7m	As Shown	100L
Sapium sebiferum	Chinese Tallow	7m	As Shown	100L
Syzygium luehmannii	Small leaf water gum	8m	As Shown	45L
Tristaniaopsis laurina 'Luscious'	Water Gum	12m	As Shown	100L
SHRUBS				
Acmena smithii minor	Lilly Pilly	1m	5/m2	150mm
Banksia spinulosa	Banksia	2m	5/m2	150mm
Buxus microphylla	Japanese Box	1.5m	5/m2	150mm
Callistemon citrinus 'Anzac'	Dwarf Bottlebrush	1.0m	5/m2	150mm
Callistemon viminalis 'Little John'	Dwarf Bottlebrush	1.0m	5/m2	150mm
Cordylina fruticosa	Ti plant	1.0m	5/m2	150mm
Dodonea viscosa 'Purpurea'	Purple Hop Bush	2m	5/m2	150mm
Doryanthes excelsa	Giant Lily	2m	5/m2	150mm
Grevillea 'Honey Gem'	Grevillea	3m	5/m2	150mm
Grevillea 'Superb'	Grevillea Superb	1.5m	5/m2	150mm
Leptospermum petersonii	Lemon-scented teatree	2.5m	5/m2	150mm
Loropetalum chinensis	Chinese fringe flower	2m	5/m2	150mm
Luculia pincana	Pink Spice	1m	5/m2	150mm
Melaleuca 'Claret Tops'	Claret Tops Paperbark	1.5m	5/m2	150mm
Michelia figo	Port Wine Magnolia	3m	5/m2	150mm
Murraya paniculata	Orange Jessamine	3m	5/m2	150mm
Nandina domestica	Sacred Bamboo	2m	5/m2	150mm
Photonia 'Red Robin'	Photonia	2m	5/m2	150mm
Syzygium australe 'Aussie Boomer'	Lilly Pilly	2m	5/m2	150mm
Syzygium Tiny Trav	Tiny Trev Lillypilly	0.8m	5/m2	150mm
Viburnum odoratissimum	Sweet Viburnum	6m	5/m2	150mm
Viburnum tinus	Rosemary	3m	5/m2	150mm
GRASSES AND GROUNDCOVERS				
Acacia cognata 'Limelight'	Wattle	0.4m	7/m²	75mm Tube
Anigozanthos flavidus	Kangaroo Paw	0.6m	7/m²	75mm Tube
Dianella caerulea 'Breeze'	Blue flax Lily	0.4m	7/m²	75mm Tube
Dianella 'Little Jess'	Paroo Lily	0.4m	7/m²	75mm Tube
Lomandra longifolia	Mat Rush	0.5m	7/m²	75mm Tube
Scaevola albidia	Fan-flower	0.25m	5/m²	150mm
Trachelospermum jasminoides	Star Jasmine	0.6m	5/m²	150mm

Key:

\* Vegetation Management Plan Species.

All species within the VMP that was provided by Ecological Australia are included within this plant schedule



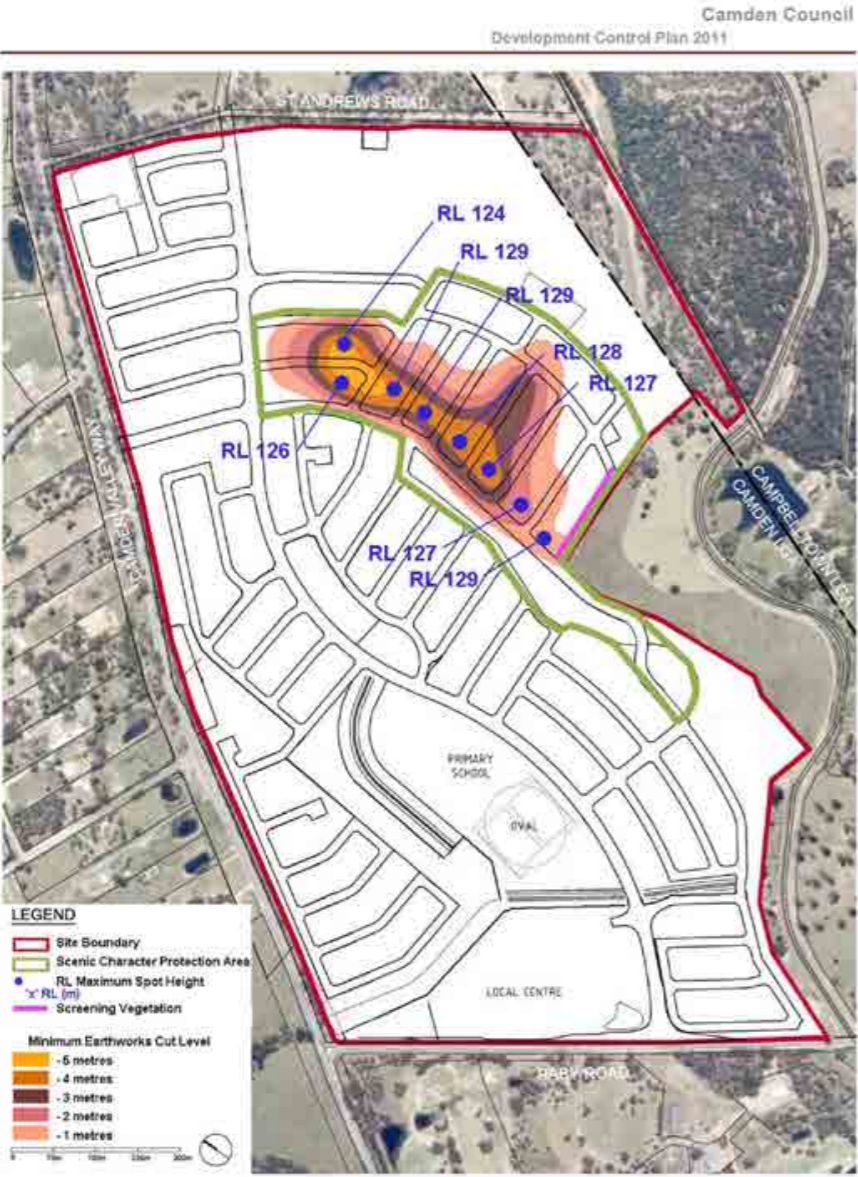


Figure C96 Scenic Character Protection Area

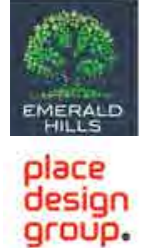
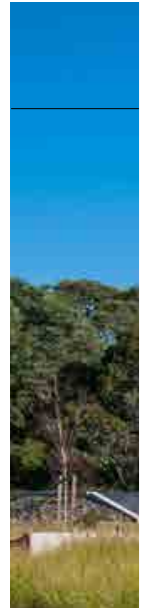


The Scenic Character protection area, as indicated by the Camden Council DCP; Part C: Residential Subdivision (extract from DCP; diagram below left), is indicated below, overlaid on the proposed Landscape plan.

The following requirements will be adopted, as per clause C13.12 (Camden Council DCP):

- Street Tree planting “shall adopt hardy dark-leaved evergreen trees with good canopy cover”.
- The ridgeline, within the Linear Park, “shall be planted with tall locally indigenous woodland species”.
- “The Southern verge of the perimeter road between the scenic character protection area and the Sydney Catchment Authority land.....shall be planted with tall locally indigenous woodland species”.

An Indicative species list is located on the previous page. For areas other than streetscapes, specific species selections / locations will be carried out during design development/ construction certificate stages.



## Streetscape Tree Palette



*Brachychiton populus*



*Ficus rubiginosa*



*Fraxinus pennsylvanica*  
'Cimmzam'



*Fraxinus pennsylvanica*  
'Urbanite'



*Pyrus calleryana*  
'Bradford'



*Lophostemon confertus*



*Magnolia grandiflora*  
'Exmouth'

## Riparian Corridor and Detention Basin Tree Palette



*Casuarina glauca*



*Eucalyptus amplifolia*



*Eucalyptus moluccana*



*Eucalyptus tereticornis*



*Brachychiton discolour*



*Cupaniopsis anacardioides*



*Elaeocarpus eticulatus*



*Lagerstroemia indica*



*Magnolia denudata*



*Melaleuca linarifolia*



*Pistacia chinensis*



*Podocarpus elatus*



*Pyrus calleryana*  
'Chanticleer'



*Sapium sebiferum*



*Syzygium luehmannii*



*Tristanopsis laurina*  
'Luscious'

## Internal Park areas & Entry Tree Palette

## Shrubs - Streetscape



*Acmena smithii* minor



*Gardenia radicans* 'Dwarf'



*Melaleuca* 'Claret Tops'



*Philodendron* 'Xanadu'

## Shrubs - Internal Park and Entry Statement



*Acmena smithii* minor



*Banksia spinulosa*



*Buxus microphylla*



*Callistemon citrinus*  
'White Anzac'



*Callistemon viminalis* 'Little John'



*Cordyline fruticosa*



*Dodonaea viscosa*  
'Purpurea'



*Doryanthes excelsa*



*Grevillea* 'Honey Gem'



*Grevillea* 'Superb'



*Leptospermum petersonii*



*Loropetalum chinensis*



*Luculia pinceana*



*Melaleuca* claret tops



*Michelia figo*



## Shrubs - Internal Park and Entry Statement cont.



*Murraya paniculata*



*Nandina domestica*



*Photinia 'Red Robin'*



*Syzygium 'Aussie boomer'*



*Syzygium 'Tiny Trev'*



*Viburnum odoratissimum*



*Viburnum tinus*

## Grasses & Groundcover - Riparian corridor and Detention basin



*Aristida ramosa*



*Aristida vagans*



*Atriplex semibaccata*



*Brunoniella australis*



*Carex appressa*



*Chloris truncata*



*Chloris ventricosa*



*Dianella longifolia*



*Dichondra repens*



*Einadia hastata*

## Grasses & Groundcover - Riparian corridor and Detention basin cont.



*Einadia nutans*



*Eremophila debilis*



*Glycine tabacina*



*Hardenbergia violacea*



*Juncus usitatus*



*Lachnagrostis stipoides*



*Microlaena stipoides*



*Poa labillardieri*



*Themeda australis*

## Macrophytes - Riparian corridor and Detention basin



*Baumea articulata*



*Baumea rubiginosa*



*Bolboschoenus fluviatilis*



*Carex appressa*



*Eleocharis acuta*



*Isolepis indundata*



*Juncus usitatus*



*Juncus kraussii*



*Schoenoplectus validus*

## Grasses and Groundcovers - Internal Park and Entry Statement



*Acacia cognata* 'Limelight'



*Anigozanthos flavidus*



*Dianella caerulea* 'Breeze'



*Dianella* 'Little Jess'



*Lomandra longifolia*



*Scaevola albida*



*Trachelospermum jasminoides*





WALL TYPES



Entry / Park Concrete wall



Entry - Sandstone clad concrete block walling



Basin - Engineers Block walling



Park - Sandstone Block walling

GROUND SURFACES.



Accent Pavement / Porphyry Setts



Standard Concrete path - all areas



Sandstone paving & banding



Concrete garden edging

FENCE TYPES



Residential Fence - Stone Pillars and Colourbond Panels



Interlocking block retaining



Chain wire with barbed wire

FURNITURE.



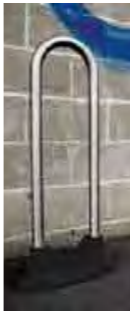
Park Seats - Aluminium Powder Coated (Black) & Timber



Park Seats - Aluminium Powder Coated (Black) & Timber



Rubbish Bins - Aluminium Powder Coated (Black) & Timber



Blade Bike Stand - Galvanised Mild Steel, base Cast Aluminium Powder Coated (Black)



Drinking Fountain - Aluminium Powder Coated (Black)

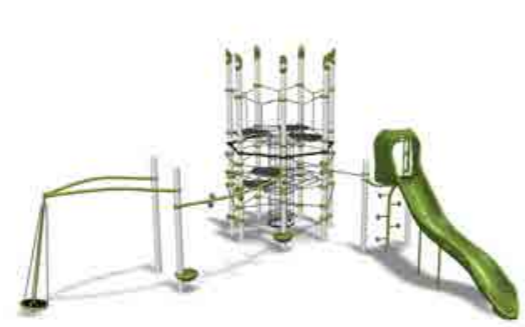


Bollards - Removable & fixed. Aluminium Powder Coated (Black)

Supplier of all furniture:  
Street Furniture Australia



PLAY EQUIPMENT:  
 (Sports field precinct)  
 PLAYSCAPE CREATIONS



80071-1-1



Single Post Swing -  
 488973-01

SKATE PARK EQUIPMENT:  
 (Sports field precinct)  
 PLAYSCAPE CREATIONS  
 + additional insitu-precast  
 elements (basins, ramps, steps  
 etc.) Design to be further  
 developed during Construction  
 Certificate / Tender pahse



Skatewave - Quater Pipe 2



Skatewave - FlatKinked-GrindRail 2

PLAY EQUIPMENT:  
 (Heritage Park)  
 PLAYSCAPE CREATIONS



Bobble Rider Dbli  
 Ages 5-12 yrs



Seesaw Stand Up  
 Ages 5-12 yrs



Big City: Cardiff  
 Ages 5-12 yrs



Oodle-Swing  
 Ages 2-12 yrs

PLAY EQUIPMENT:  
 (Linear Park)  
 PLAYSCAPE CREATIONS



Wiggle worm crawl tunnel  
 Ages 2-5 yrs



Turf Riders Aeroplane  
 Ages 5-12 yrs



Seesaw 2 Seat  
 Ages 5-12 yrs

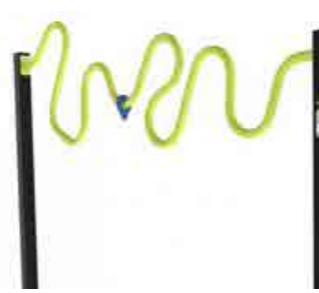


Play Shaper PB - 1524  
 Ages 5-12 yrs

FITNESS EQUIPMENT:  
 (Linear Park)  
 The great outdoor gym company



Ski machine



Senior dexterity bar



Hand bike



Cross trainer



Lat pull down  
 & shoulder press



Recumbent bike



Chest press /  
 seated row